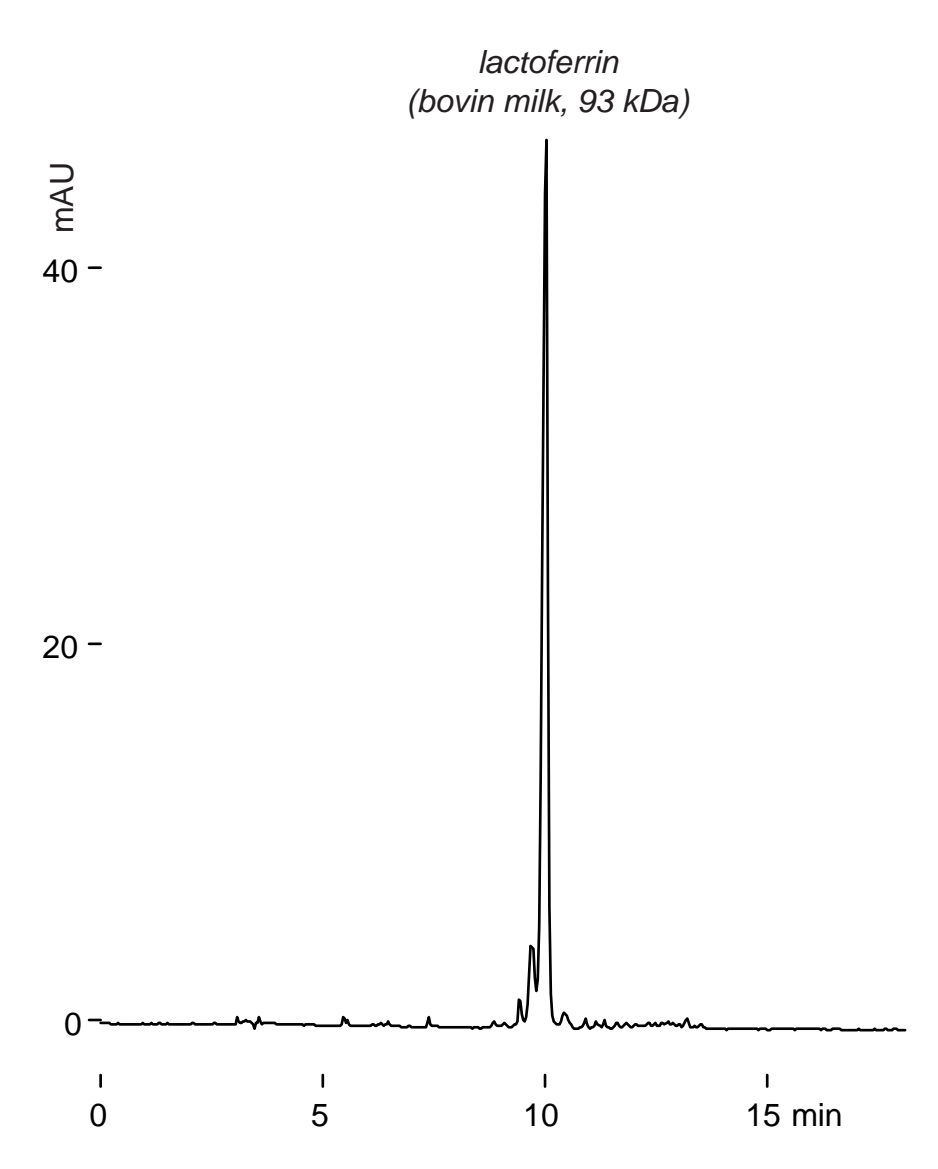


**Intrada WP-RP**

250 x 4.6 mm

Application

**Protein, Lactoferrin**  
タンパク質, ラクトフェリン

*Intrada WP-RP, 250 x 4.6 mm*  
*A: water / TFA = 100 / 0.1*  
*B: acetonitrile / TFA = 100 / 0.07*  
*20-50%B (0-15min)*  
*1.0 mL/min (16 MPa)*  
*37 °C, 280 nm, 3 µL (15.3µg)*