

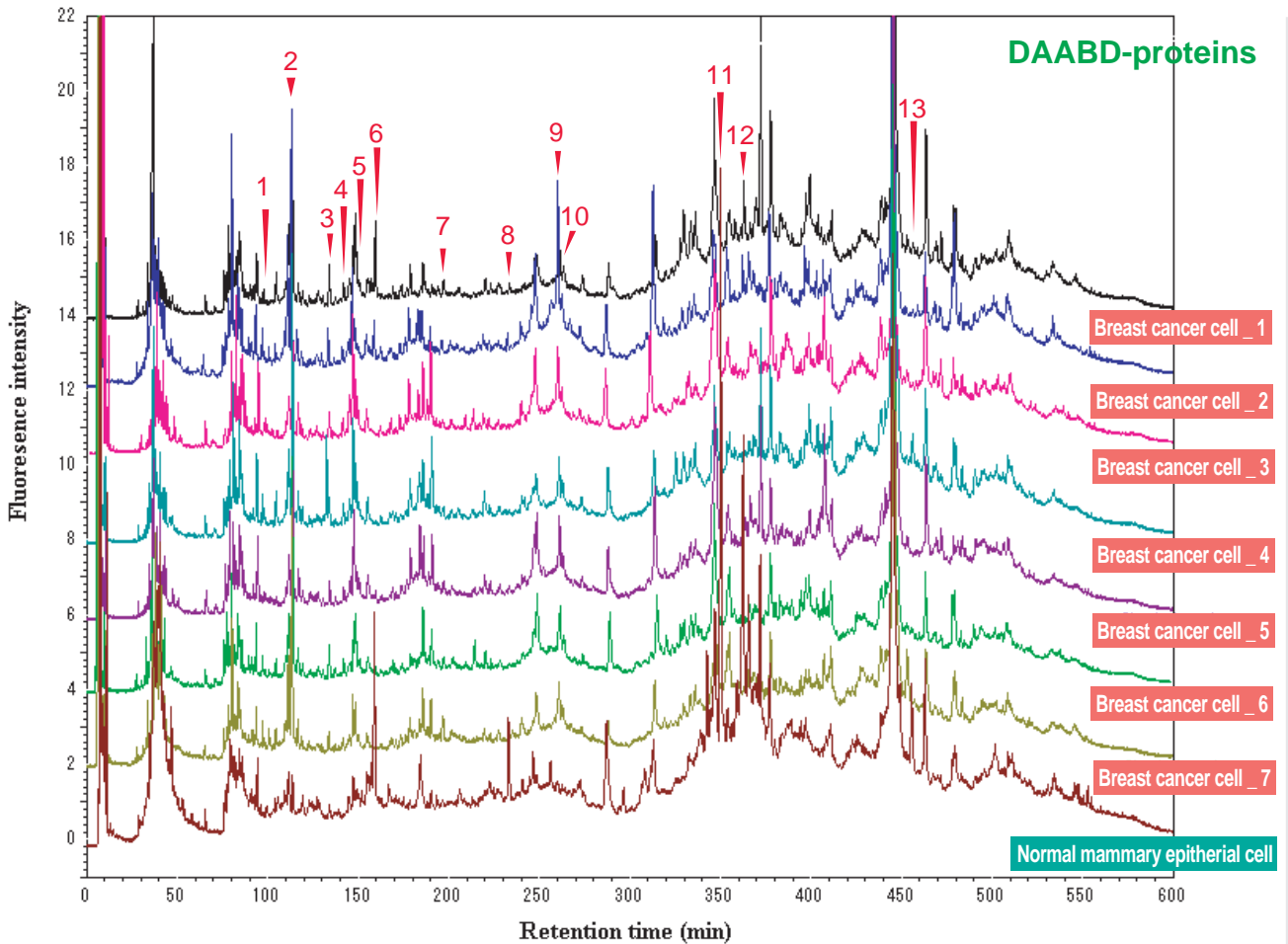
Intrada WP-RP

250 x 4.6 mm

Application

A proteomics study on human breast cancer cell lines by fluorogenic derivatization-liquid chromatography/tandem mass spectrometry

蛍光誘導体化 LC-MS/MS法による乳癌細胞のプロテオーム解析



Ref-1: *Biomedical Chromatography*, 2008, 22 (11), 1304-1314

Ref-2: *Journal of Proteome Research*, 2007, 6, 2841-2849

Intrada WP-RP, 250 x 4.6 mm

A: 0.15% TFA in (acetonitrile /isopropanol /water = 9 /1 /90)

B: 0.15% TFA in (acetonitrile /isopropanol /water = 69 /1 /30)

C: 0.20% TFA in (acetonitrile /isopropanol /water = 9 /1 /90)

5%B,1%C(0-5min), 5-30%B,1-35%C (5-30min), 30%B,35%C(30-65min)

30-35%B,35%C(65-70min), 35-38%B,35%C(70-130min)

38-44%B,35-55%C(130-250min), 44%B,55%C(250-300min)

44-47%B,55-53%B(300-330min), 47-60%B,53-40%C(330-480min)

60-70%B,40-30%C(480-520min), 70-90%B,30-10%C(520-570min)

0.55 mL/min, 60 deg.C, FLD(Ex.395nm, Em.505nm)

Courtesy of Kazuhiro Imai, Ph.D. Dhc., Professor & Dean, Musashino University, Japan