

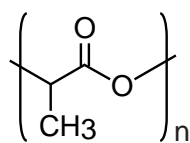
Presto FF-C18

30 x 4.6 mm

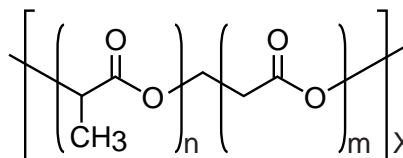
Application

**Biodegradable polymer
(poly (DL-lactide) and poly (DL-lactide-co-glycolide))**

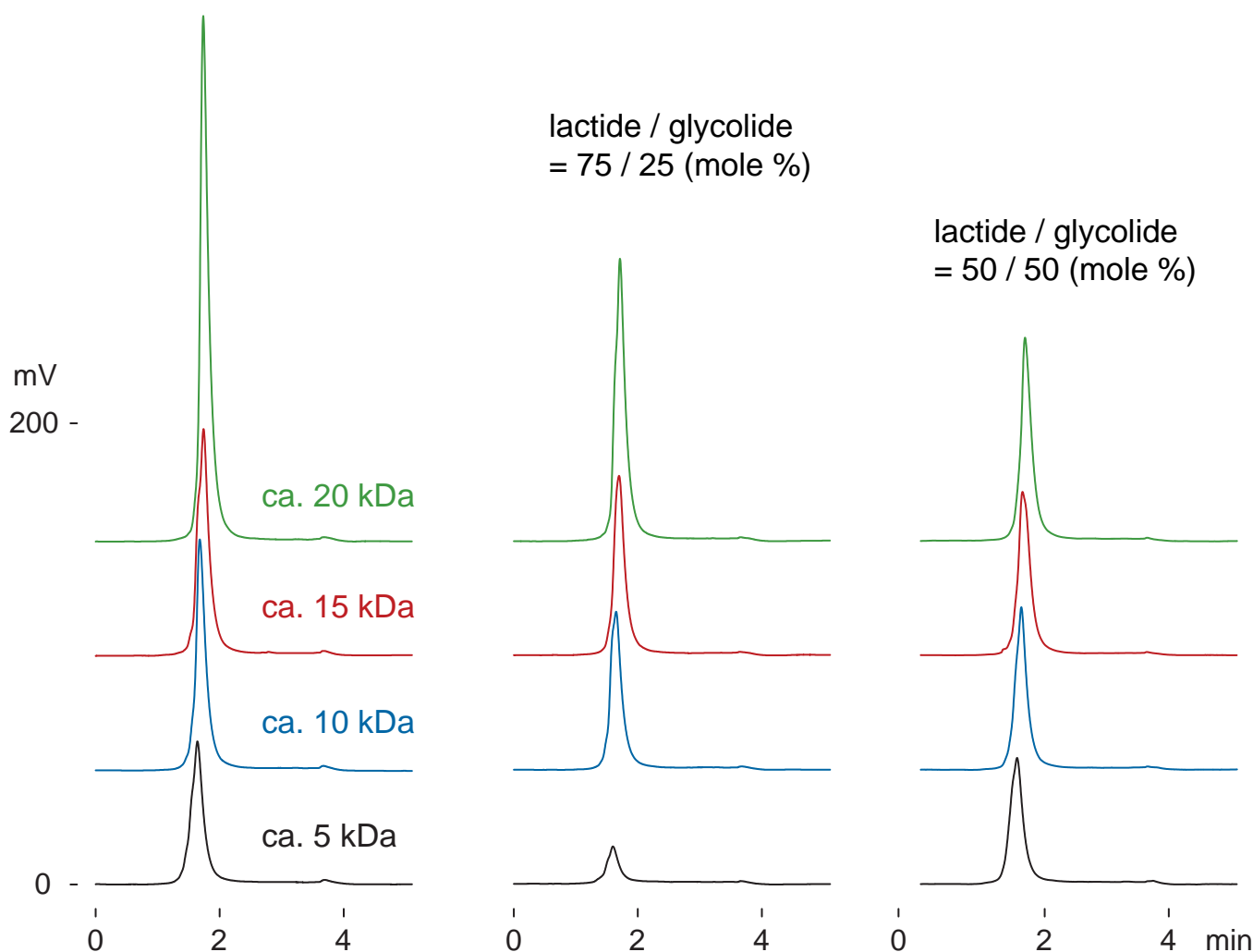
生分解ポリマー (DL-乳酸ポリマー, DL-乳酸 / グリコール酸コポリマー)



poly (DL-lactide)



poly (DL-lactide-co-glycolide)



Presto FF-C18, 30 x 4.6 mm

A: water / formic acid = 100 / 0.1

B: acetone / ethyl acetate / formic acid = 70 / 30 / 0.1

0-100 %B (0-1.5min), 100 %B (1.5-3min)

0.6 mL/min (4 MPa), 60 deg.C

ELSD (spray chamber 45 deg.C, drift tube 100 deg.C), 0.4 uL (4 ug, THF)