

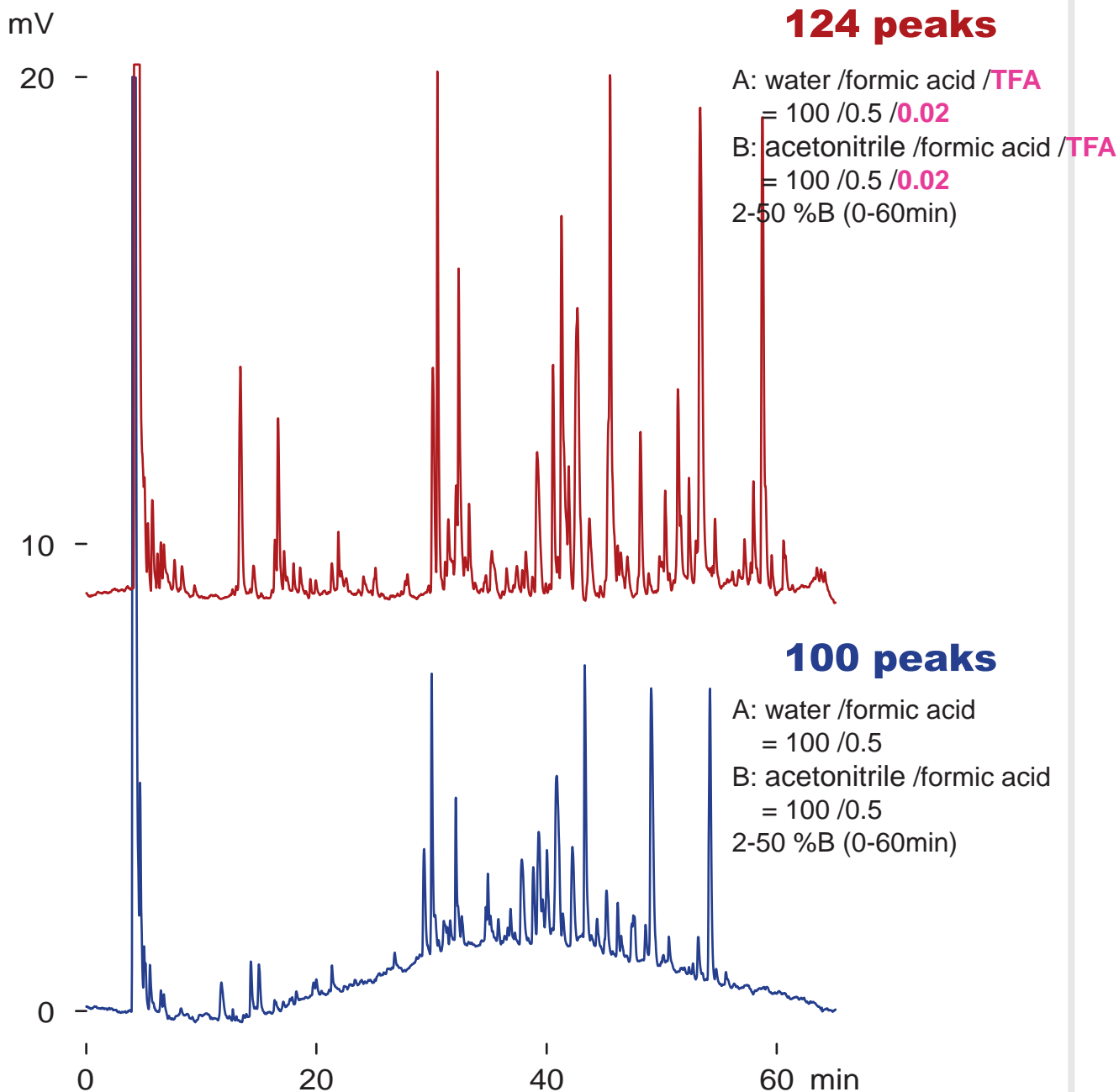
Presto FF-C18

250 x 4.6 mm

Application

## The effect of TFA modifier on peptide mapping

ペプチドマッピングにおけるトリフルオロ酢酸の影響



Presto FF-C18, 250 x 4.6 mm  
0.4 mL/min (22MPa), 50 deg.C  
ELSD(spray chamber 35 deg.C, drift tube 100 deg.C)  
tryptic digest of alpha-casein 20 uL