

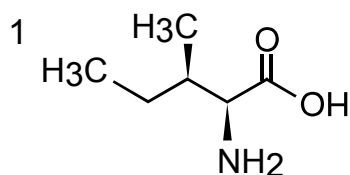
Intrada Amino Acid

150 x 3 mm

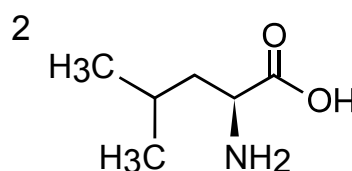
Application

LC-MS: Leucine isomers

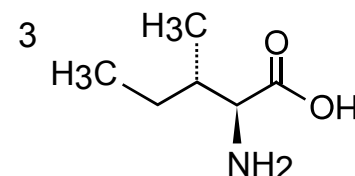
ロイシン異性体のLC-MS分析



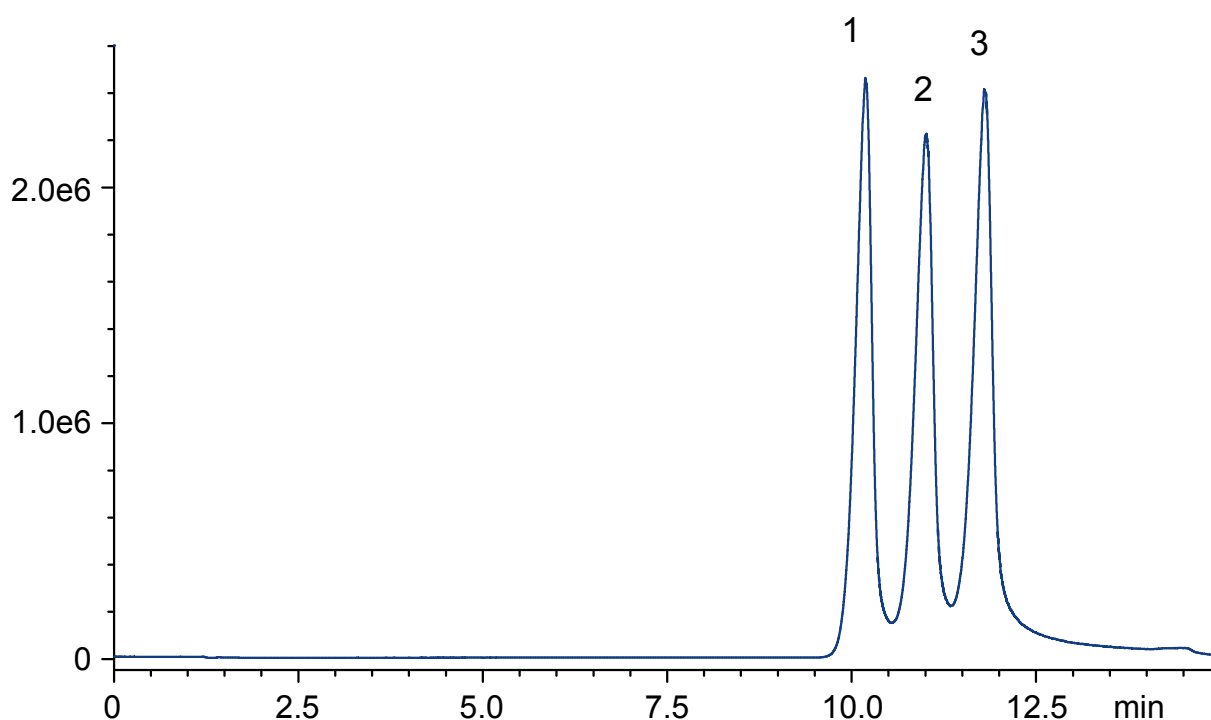
allo-L-isoleucine



L-leucine



L-isoleucine



Intrada Amino Acid, 150 x 3 mm

A: methanol / water / formic acid = 85 / 15 / 0.3

B: acetonitrile / 100mM ammonium formate = 20 / 80

12-13 %B (0-12 min), 100 %B (12-15 min)

0.4 mL/min (11 MPa), 35°C, 5uL (1mM, 0.1N HCl)

Single Quad.MS (ESI, positive, m/z 132.0)