

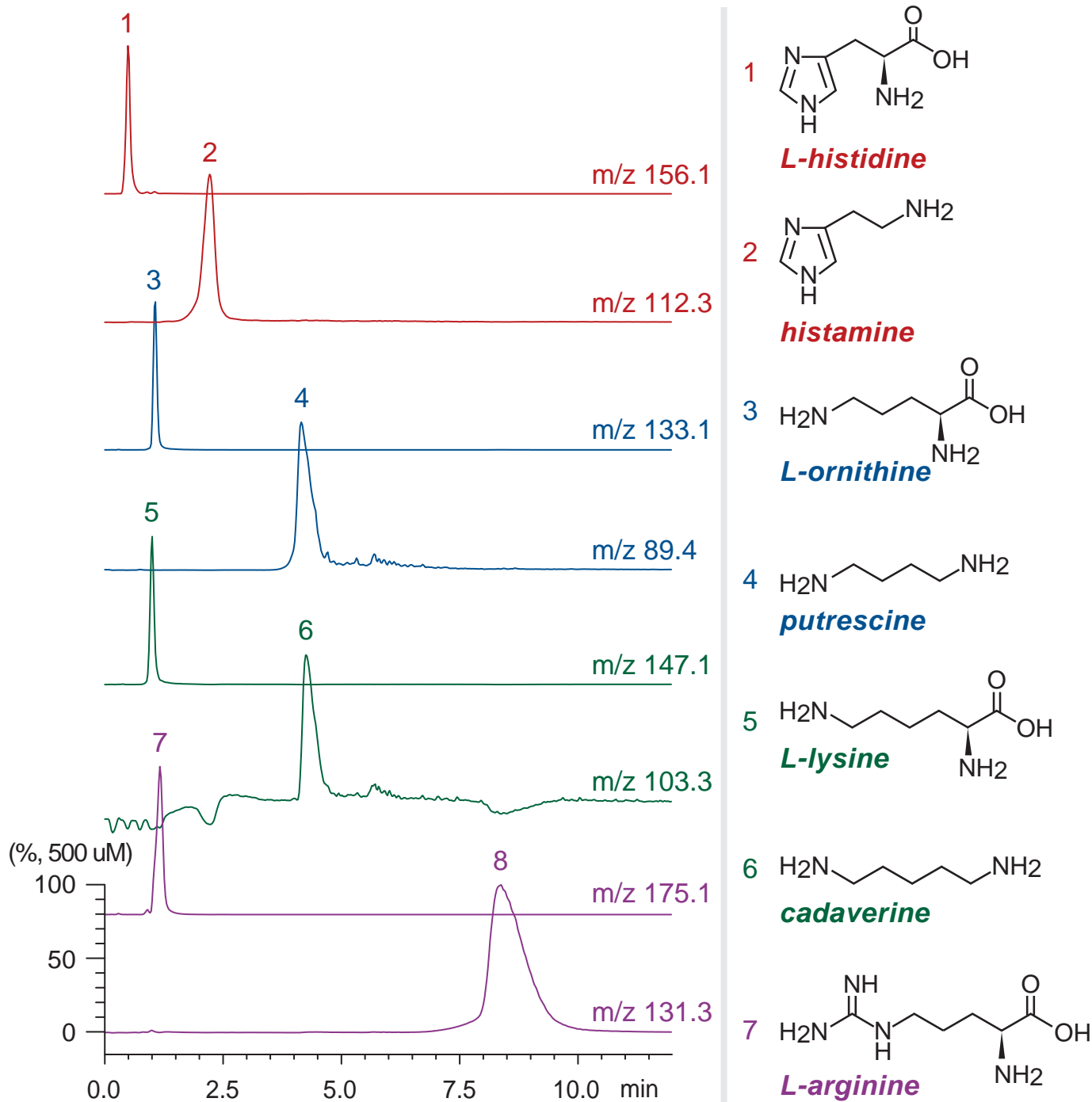
Intrada Amino Acid

10 x 3 mm

Application

LC-MS: biogenic amines and precursor amino acids (3)

腐敗アミンと前駆アミノ酸のLC-MS分析 (3)



Intrada Amino Acid, 10 x 3 mm
 A: methanol / formic acid = 100 / 0.1
 B: 180 mM ammonium formate
 40-100 %B (0-2min), 100 %B (2-12min)
 0.4 mL/min (3 MPa), 37°C, 15uL (500nmol/mL, 0.1N HCl)
 Single Quad. MS (ESI, positive)

