

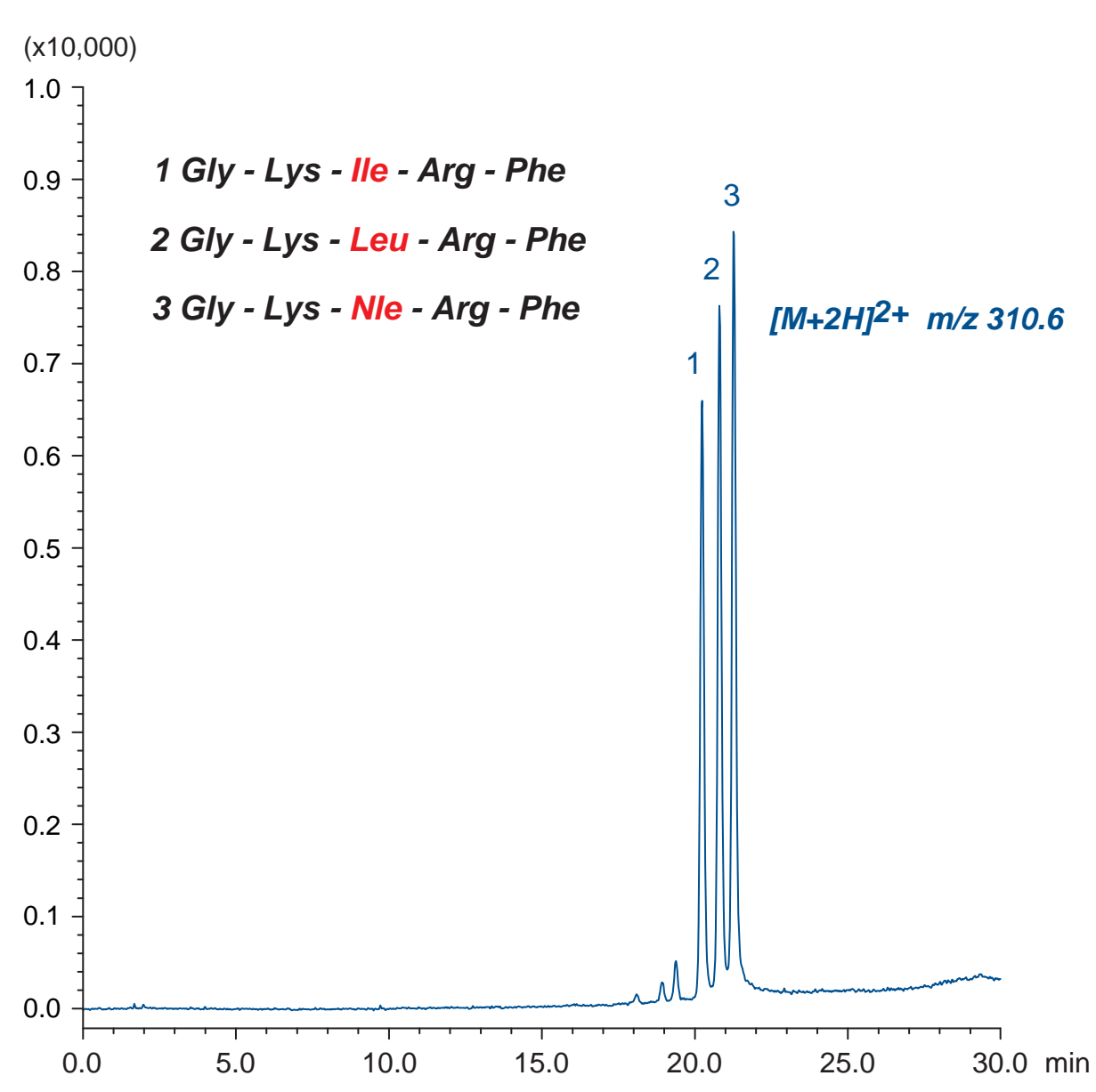
Scherzo SW-C18

150 x 2 mm

Application

LC-MS: Peptides containing leucine isomers

ロイシン異性体を含むペプチドのLC-MS分析



Scherzo SW-C18, 150 x 2 mm

A: water / formic acid = 100 / 0.1

B: acetonitrile / 100mM ammonium formate = 20 / 80

20-100 %B (0-25 min), 100 %B (25-30 min)

0.2 mL/min (10 MPa), 37°C, 10 µL (100 ng/mL, 1% HCOOH)

Single Quad. MS (ESI, positive)

Courtesy of Dr. Kiyoshi Nokihara, HiPep Laboratories, JAPAN