

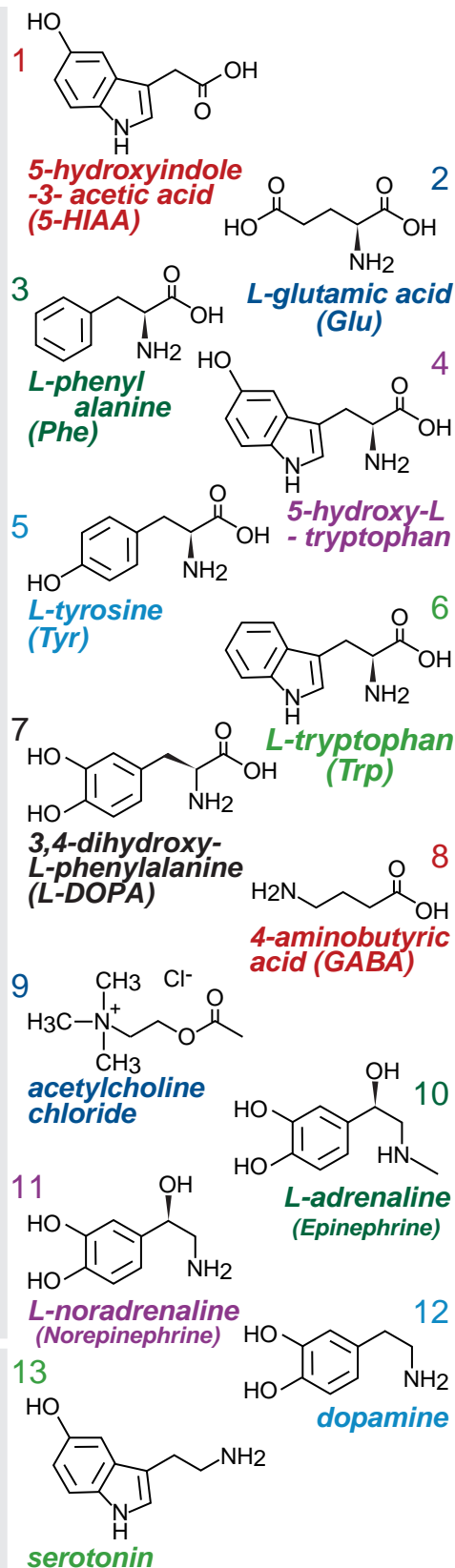
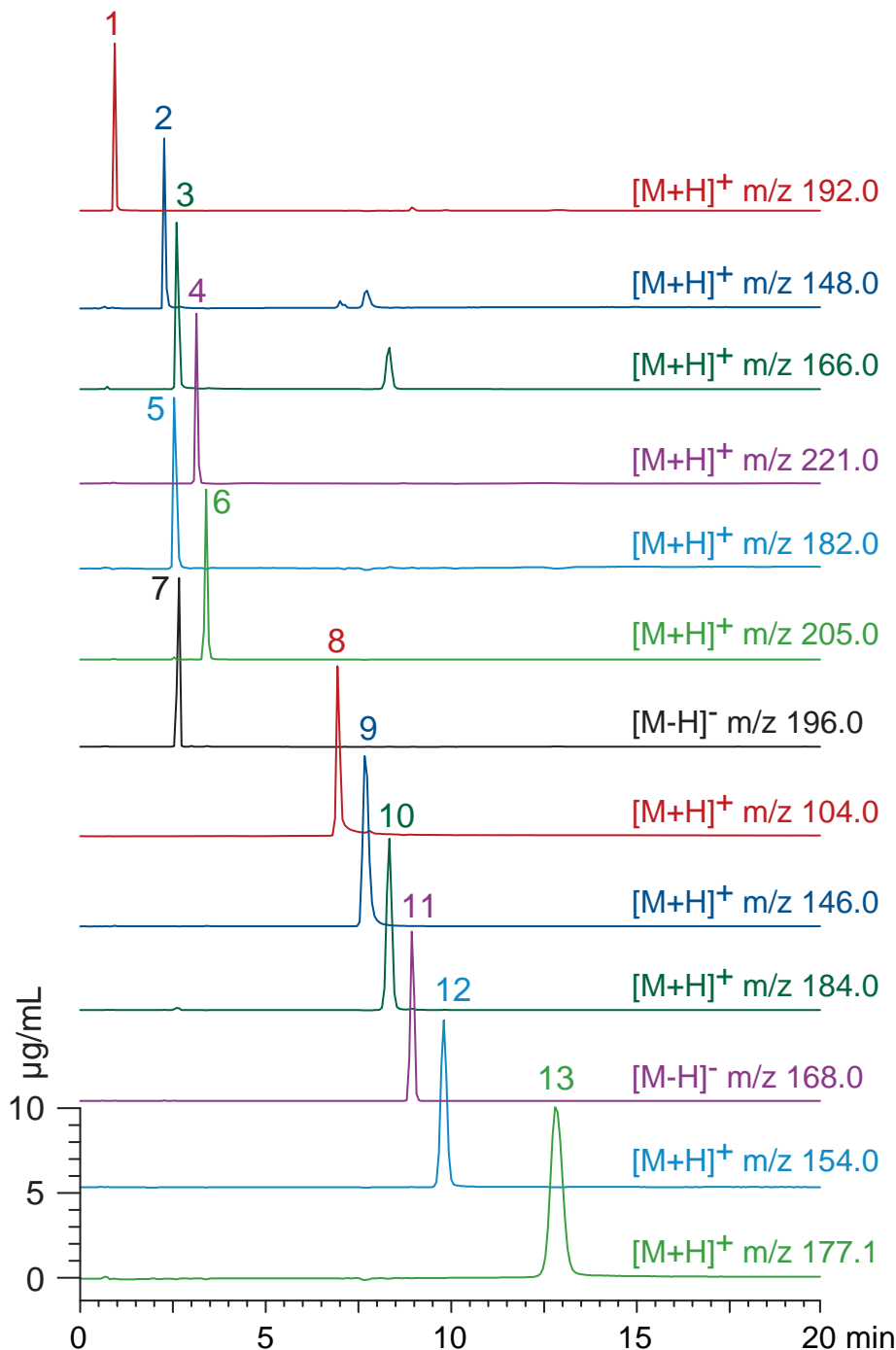
Intrada Amino Acid

100 x 3 mm

Application

LC-MS: neurotransmitters (2)

神経伝達物質のLC-MS分析 (2)



Intrada Amino Acid , 100 x 3 mm

A: methanol / water / formic acid = 80 / 20 / 0.3

B: methanol / 100mM ammonium formate = 30 / 70

20 %B (0-1min), 20-100 %B (1-10min), 100 %B (10-20min)

0.6 mL/min (12 MPa), 37°C, 20 µL (10µg/mL, 1% HCOOH)

Single Quad. MS (ESI, positive, negative)