

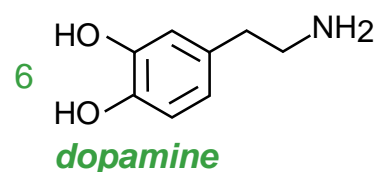
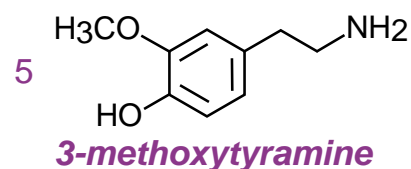
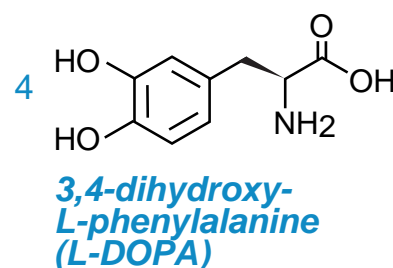
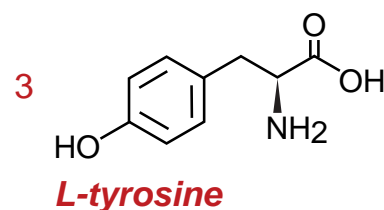
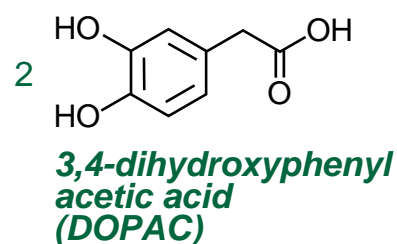
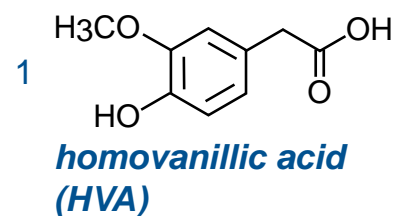
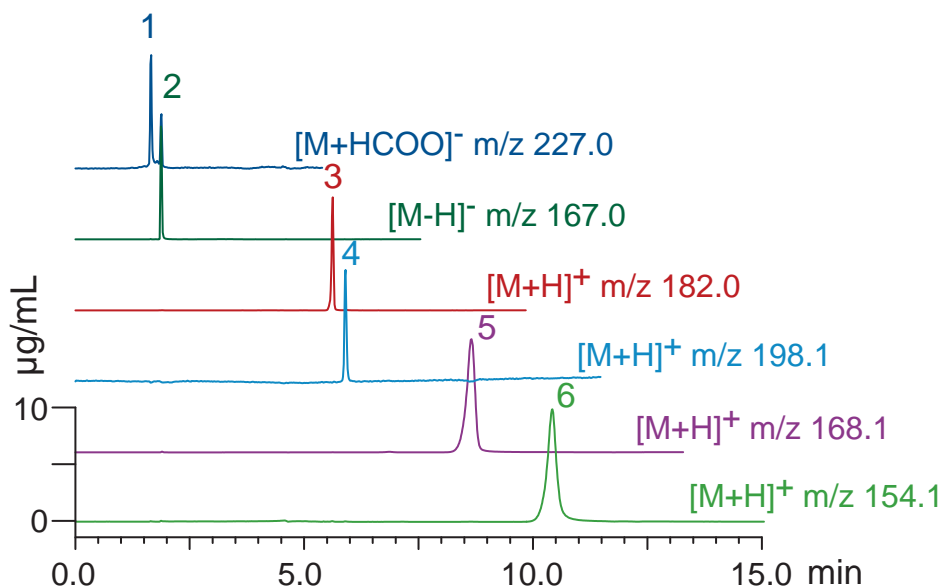
**Intrada** Amino Acid  
**Scherzo SS-C18**

150 x 3 mm

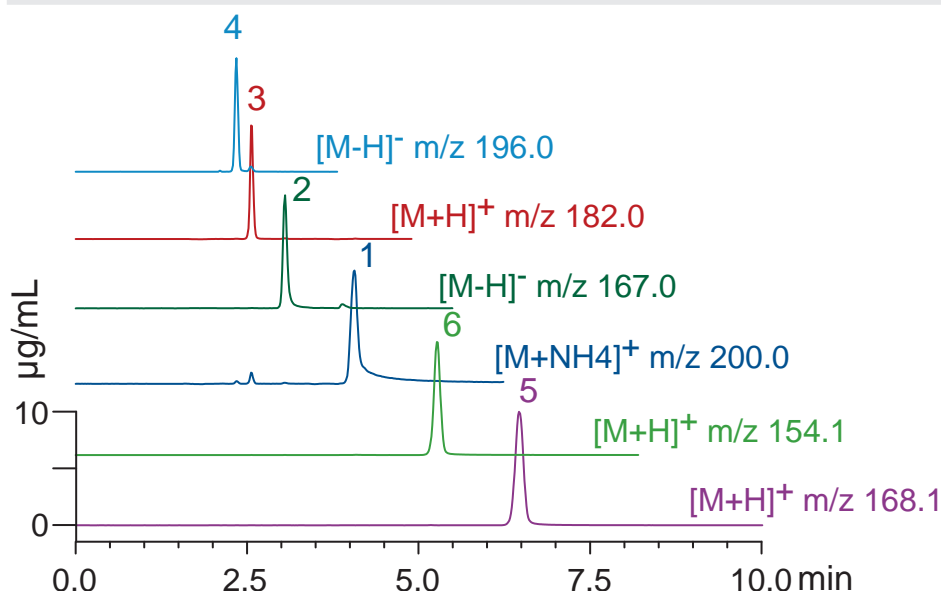
Application

**LC-MS: tyrosine metabolism pathway**

チロシン代謝経路のLC-MS分析



Intrada Amino Acid, 150 x 3 mm  
A: acetonitrile / formic acid = 100 / 0.3  
B: 100mM ammonium formate  
10-100 %B (0-10min), 100 %B (10-15min)  
0.5 mL/min (6 MPa), 37°C, 20 µL (10µg/mL, 1% HCOOH)  
Single Quad. MS (ESI)



Scherzo SS-C18, 150 x 3 mm  
A: methanol / water / formic acid = 35 / 65 / 0.5  
B: methanol / 100mM ammonium formate = 40 / 60  
35-100 %B (0-10min)  
0.4 mL/min (13 MPa), 37°C, 20 µL (10µg/mL, 1% HCOOH)  
Single Quad. MS (ESI)