

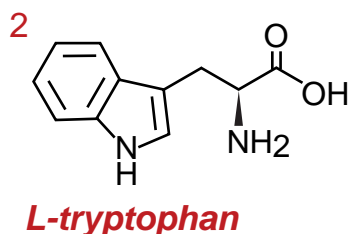
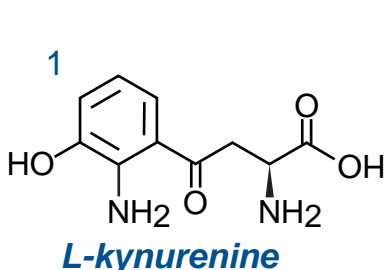
Intrada Amino Acid
Scherzo SS-C18

100 x 3 mm

Application

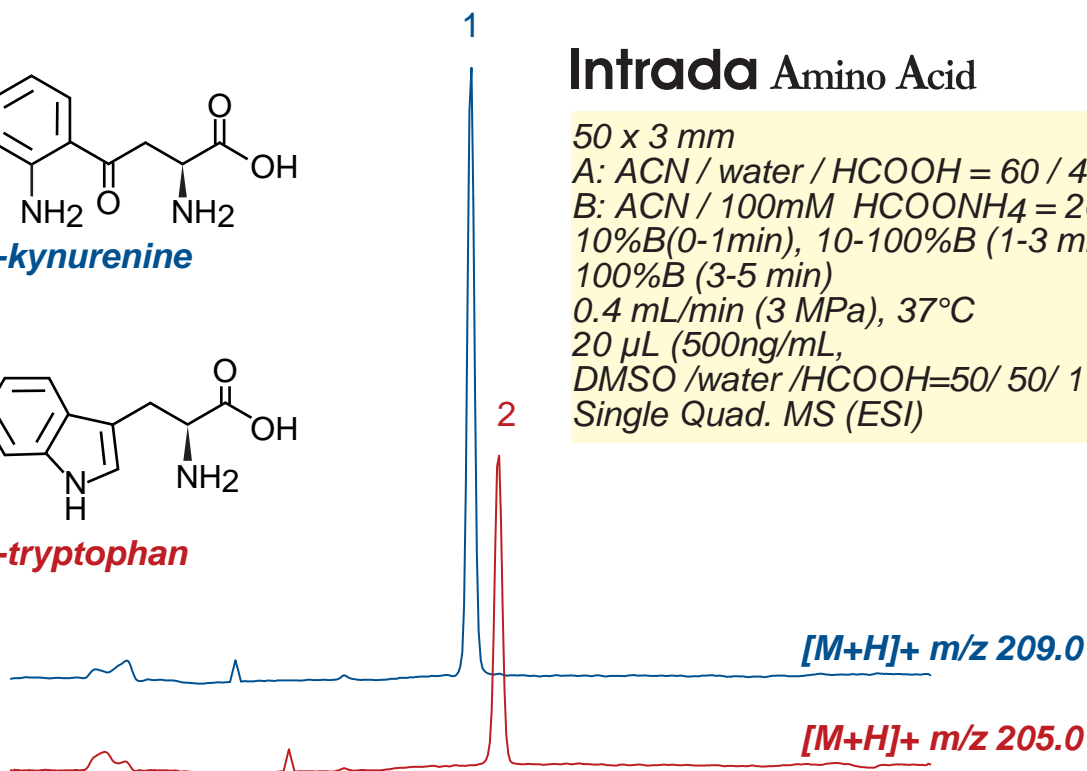
LC-MS: Kynurenine / Tryptophan Ratio (KTR)

キヌレニン / トリプトファン比 (KTR)



Intrada Amino Acid

50 x 3 mm
 A: ACN / water / HCOOH = 60 / 40 / 0.5
 B: ACN / 100mM HCOONH₄ = 20 / 80
 10%B(0-1min), 10-100%B (1-3 min)
 100%B (3-5 min)
 0.4 mL/min (3 MPa), 37°C
 20 µL (500ng/mL,
 DMSO /water /HCOOH=50/ 50/ 1)
 Single Quad. MS (ESI)



Scherzo SS-C18

50 x 3 mm
 A: ACN / water / HCOOH = 20 / 80 / 0.5
 B: ACN / 100mM HCOONH₄ = 20 / 80
 0%B(0-0.5 min), 0-100%B (0.5-3 min)
 100%B (3-5 min)
 0.4 mL/min (4 MPa), 37°C
 20 µL (500ng/mL, 1% formic acid)
 Single Quad. MS (ESI)

