

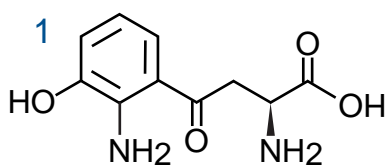
Scherzo SS-C18

50 x 3 mm

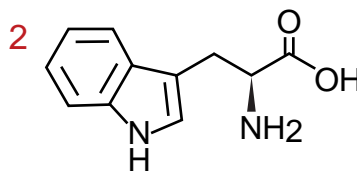
Application

LC-MS: Kynurenine / Tryptophan Ratio (KTR) of Human serum

ヒト血清のキヌレニン / トリプトファン比 (KTR)



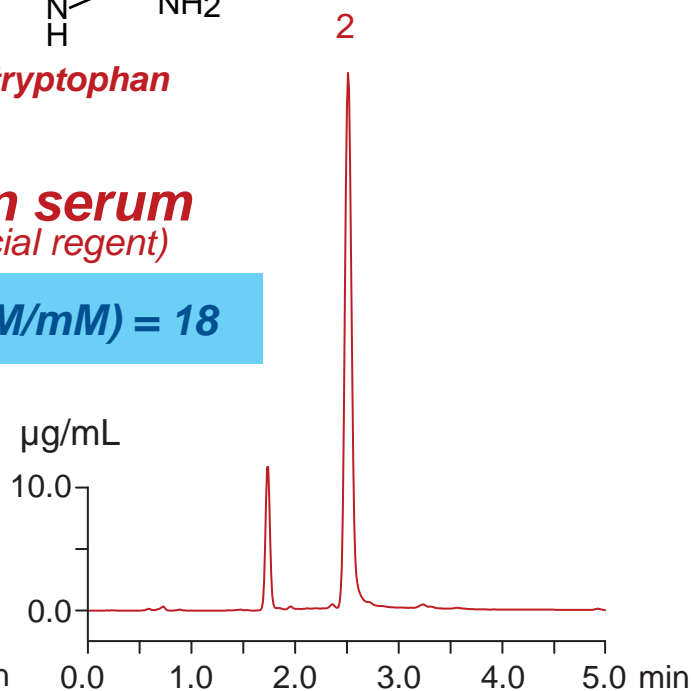
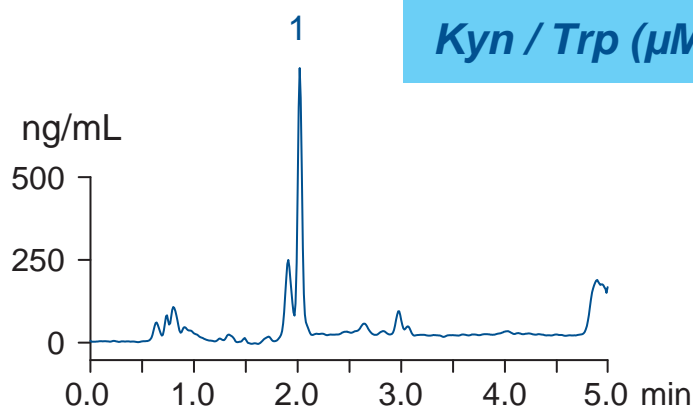
L-kynurenine



L-tryptophan

Human serum
(commercial reagent)

Kyn / Trp (μM/mM) = 18



Human serum

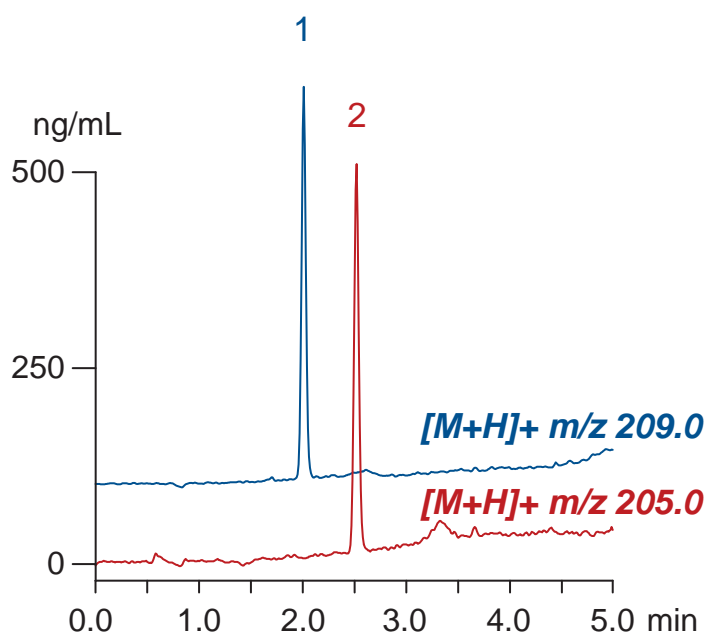
← 5% 5-sulfosalicylic acid (1:1, vol)

← mixing

← centrifugation (12000 rpm, 5 min)

Supernatant
(Injection Sample)

Standard solution
(500 ng/mL, 1% HCOOH)



50 x 3 mm

A: ACN / water / HCOOH = 10 / 90 / 0.5

B: ACN / 100mM HCOONH₄ = 20 / 80

10-100%B (0-3 min), 100%B (3-5 min)

0.4 mL/min (4 MPa), 37°C, 20 μL

Single Quad. MS (ESI)