

Intrada SEC

250 x 4.6 mm

Application

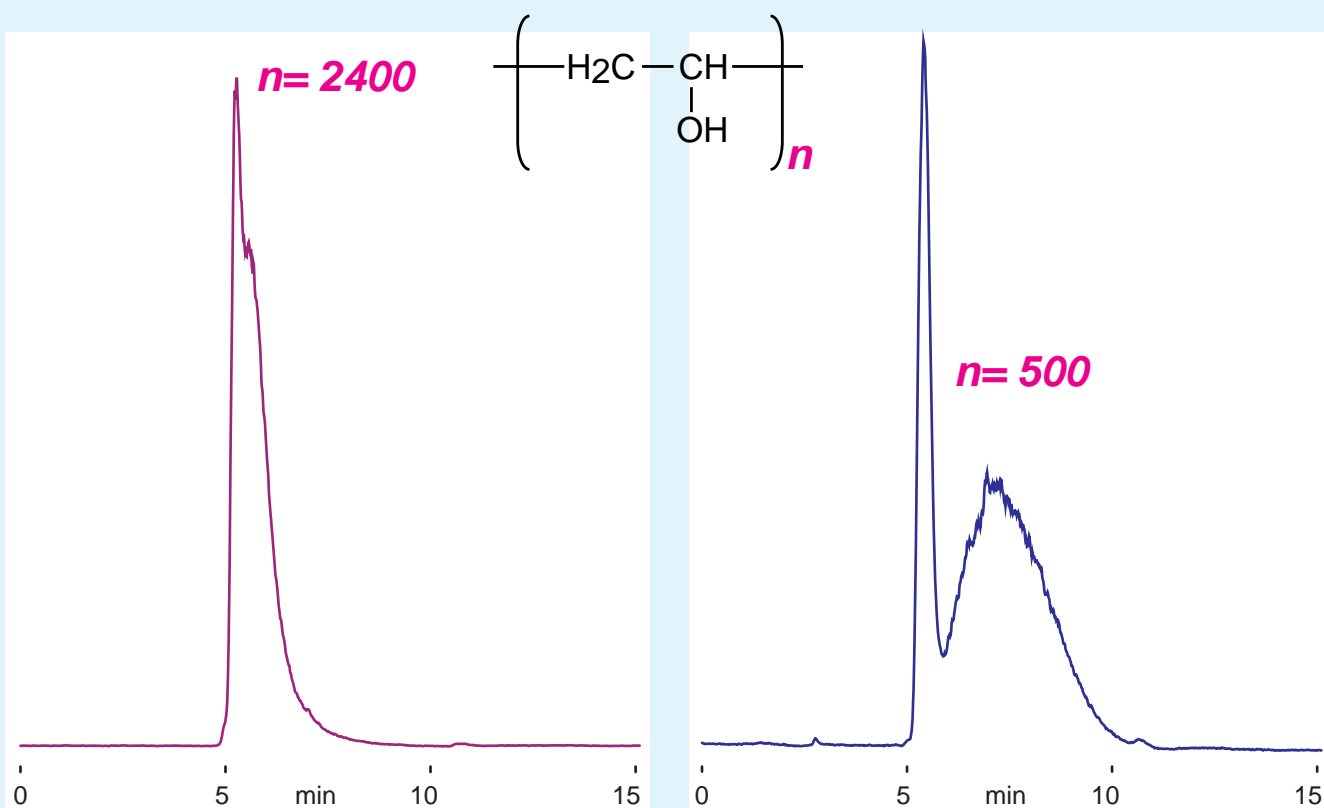
SEC: Polyvinyl Alcohol (PVA)

ポリビニルアルコール(PVA)のSEC分離

PVA **Intrada SEC**

Polyvinyl alcohol

Hydrolysis 87-89 mol%



875

*Intrada SEC, 250x4.6mm
water / methanol = 90 / 10
0.3mL/min (6MPa), 37 °C
ELSD
20 μ L (2mg/mL, water)*