

**Intrada SEC**

250 x 4.6 mm

Application

**SEC:  $\alpha$ -Amylase**

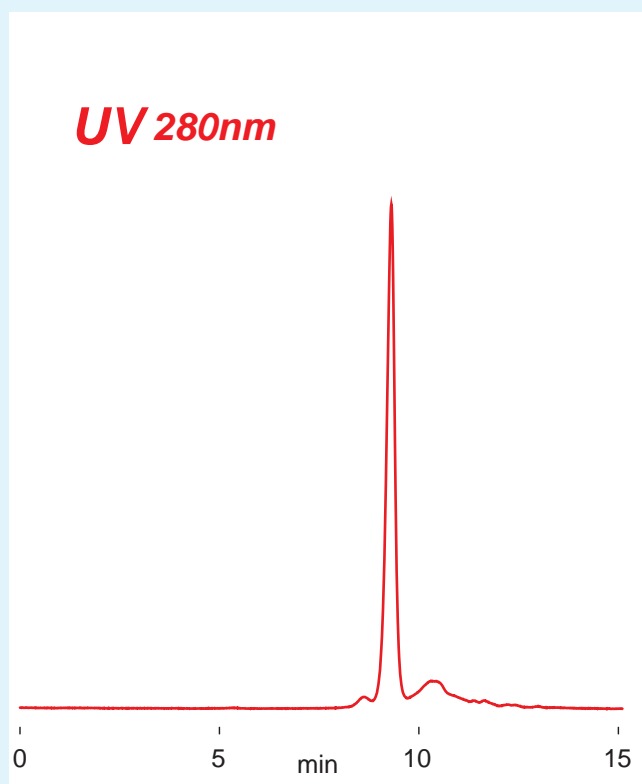
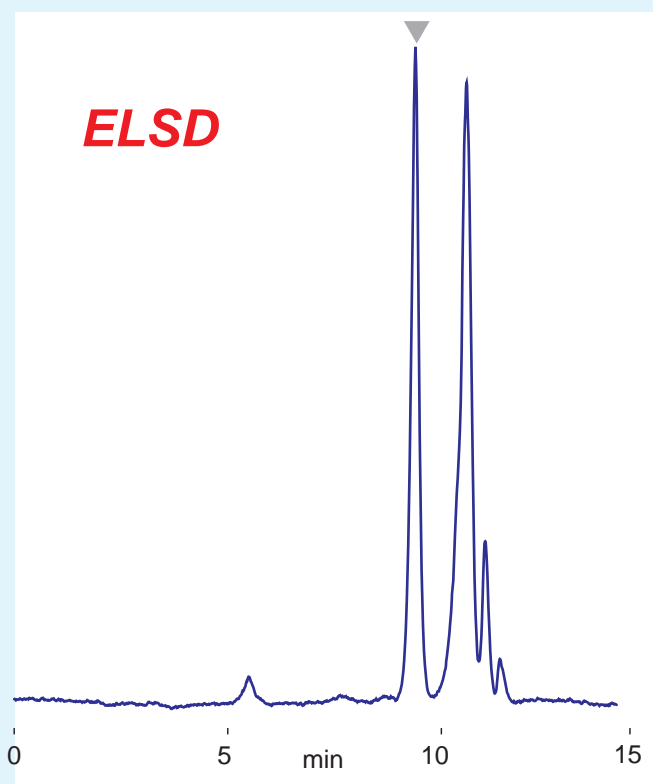
$\alpha$ -アミラーゼのSEC分離



**SEC:  $\alpha$ -Amylase**

**Intrada SEC**

**$\alpha$ -Amylase (*Bacillus sp.*) 50-55 kDa**



889

*Intrada SEC, 250 x 4.6 mm  
100mM ammonium formate  
0.3 mL/min (5MPa), 37°C  
10  $\mu$ L (1mg/mL, eluent)*