

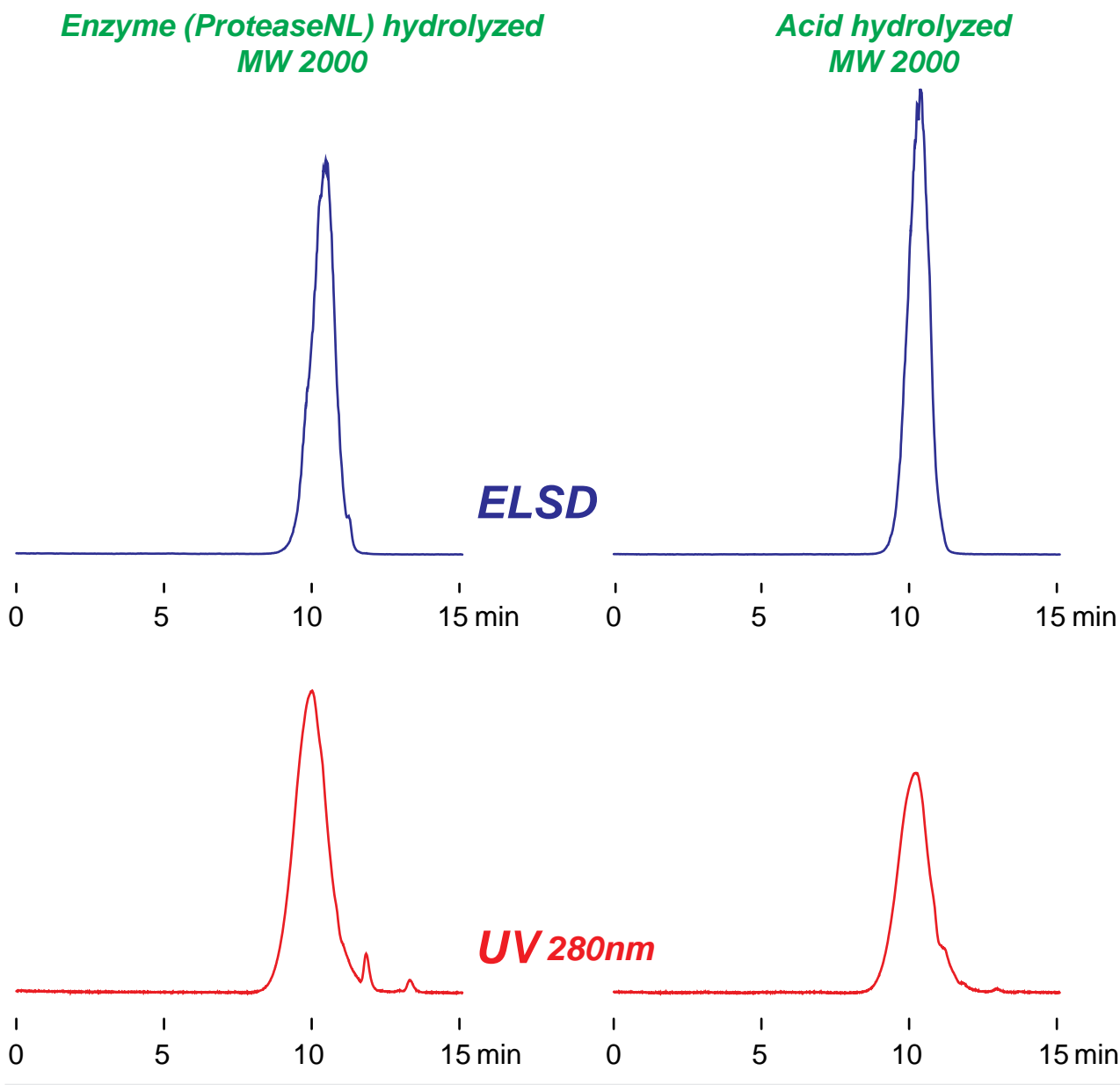
**Intrada SEC**

250 x 4.6 mm

Application

**SEC: Collagenpeptide**

コラーゲンペプチドのSEC分離



*Intrada SEC, 250 x 4.6 mm  
100mM ammonium formate  
0.3 mL/min (5MPa), 37°C  
10 µL(ELSD), 20 µL(UV) (5mg/mL, water)*