

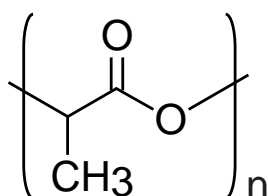
Intrada SEC

250 x 4.6 mm

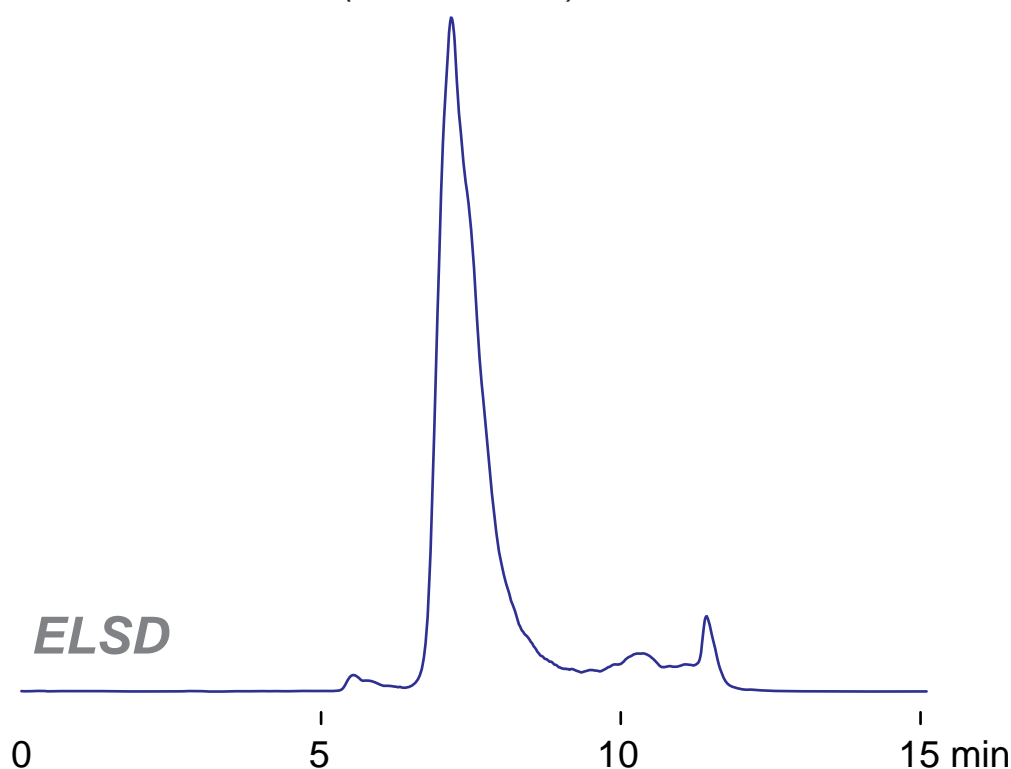
Application

SEC: Polylactide (PLA)

ポリ乳酸のSEC分離



poly DL-lactide
(75 ~ 120 kDa)



Intrada SEC, 250 x 4.6 mm
acetonitrile / water = 80 / 20
0.3 mL/min (3MPa), 37°C
5 μL (5mg/mL, THF)