

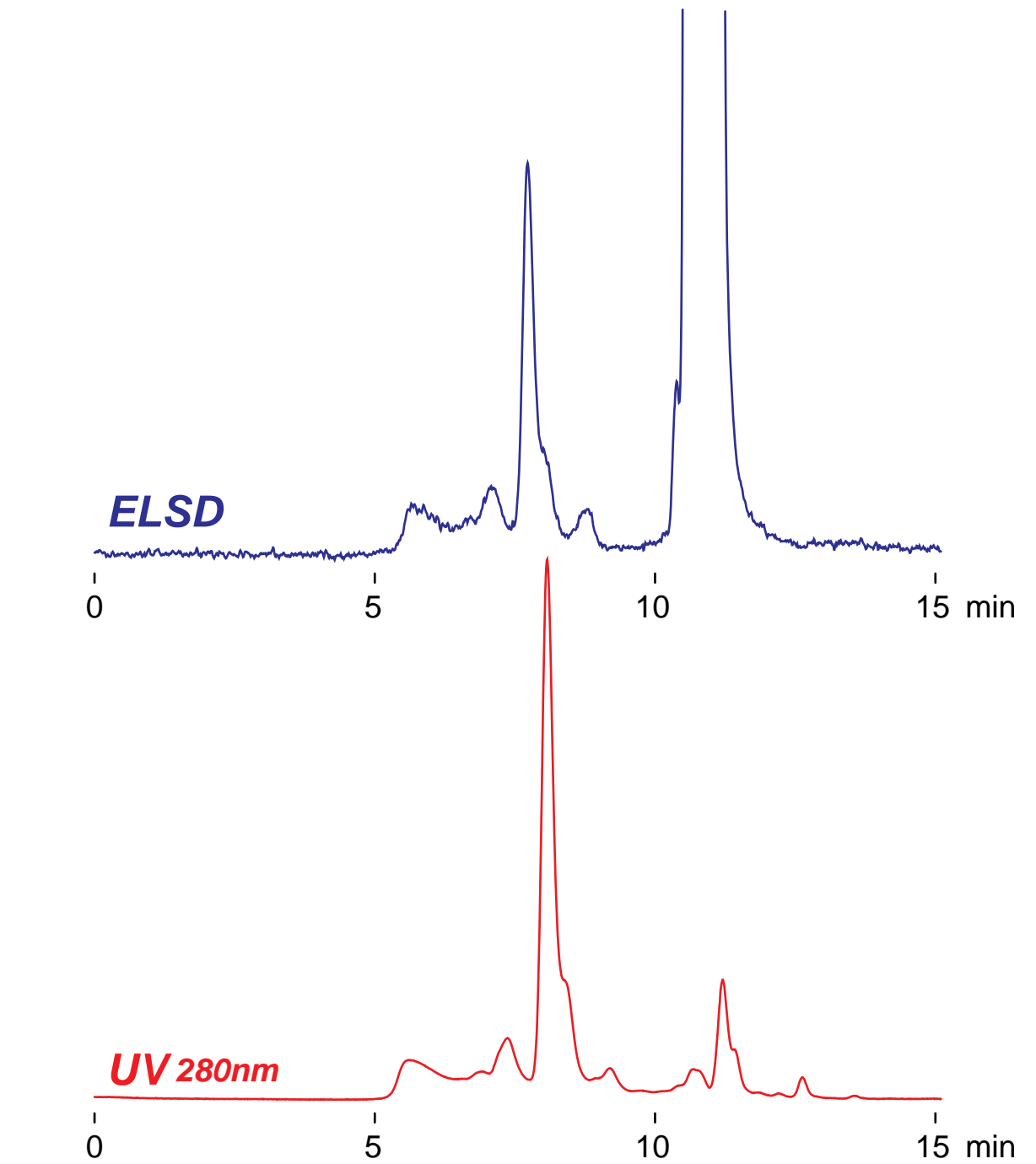
Intrada SEC

250 x 4.6 mm

Application

SEC: mAb (Anti-Human luteinizing hormone)

モノクローナル抗体 (Anti-Human luteinizing hormone)のSEC分離



Intrada SEC, 250 x 4.6 mm
100mM ammonium formate
0.3 mL/min (5MPa), 37°C
20 μ L, (1mg/mL, PBS + 0.05% NaN₃)