

Cadenza CX-C18

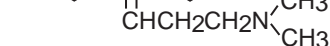
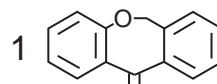
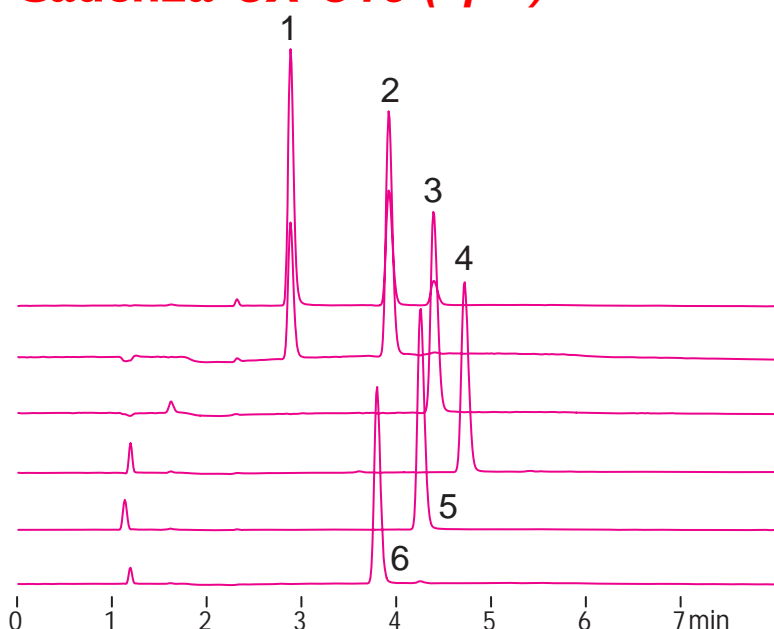
150 x 3 mm

Application

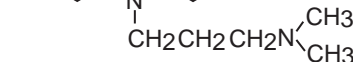
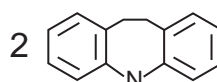
LC-MS: Antidepressant drugs under acidic conditions

酸性移動相による抗うつ薬のLC-MS分析

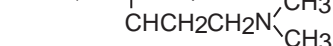
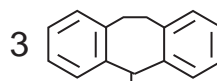
Cadenza CX-C18 (3 μ m)



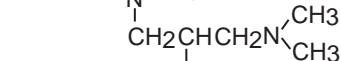
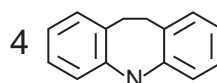
doxepine [M+H]⁺ m/z 280.1



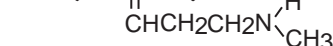
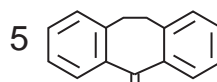
imipramine [M+H]⁺ m/z 281.2



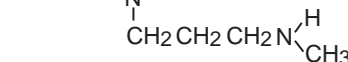
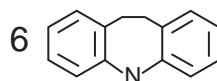
amitriptyline [M+H]⁺ m/z 278.2



trimipramine [M+H]⁺ m/z 295.2

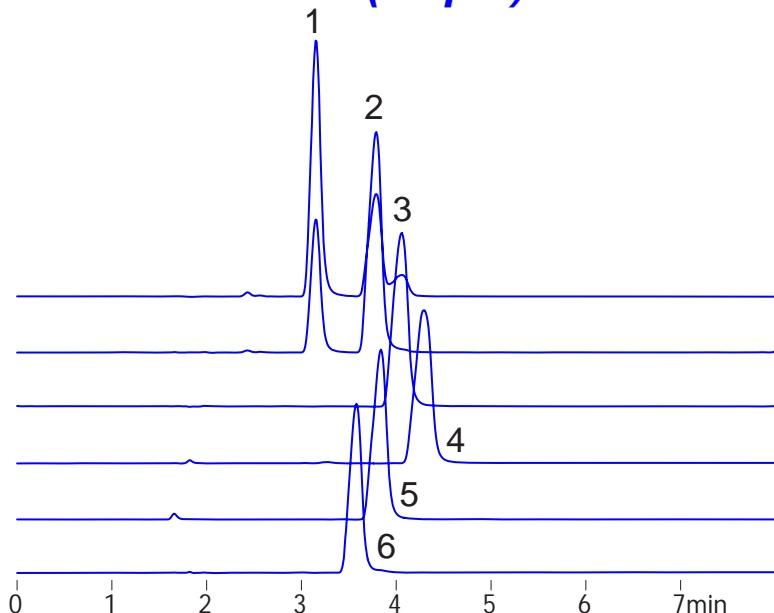


nortriptyline [M+H]⁺ m/z 264.1



desipramine [M+H]⁺ m/z 267.2

BRAND-XB C18 (3.5 μ m)



150 x 3 mm

A: water / formic acid = 100 / 0.1

B: acetonitrile / formic acid = 100 / 0.1

CX-C18 (20-30%B), Brand-XB (45-55%B) in 8min

0.4 mL/min (9MPa), 37°C

5 μ L (100 ng/mL, 0.1% HCOOH)

Single Quad.MS, positive