

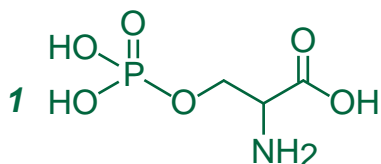
Intrada Amino Acid

100 x 3 mm

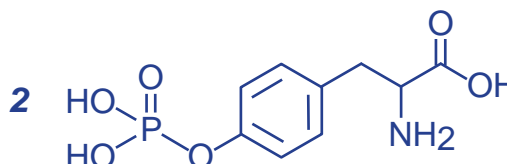
Application

LC-MS: Phosphorylated amino acids

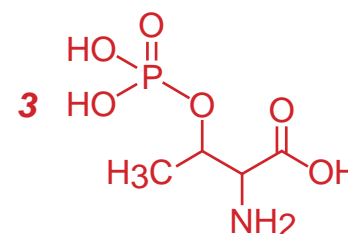
リン酸化アミノ酸の LC-MS分析



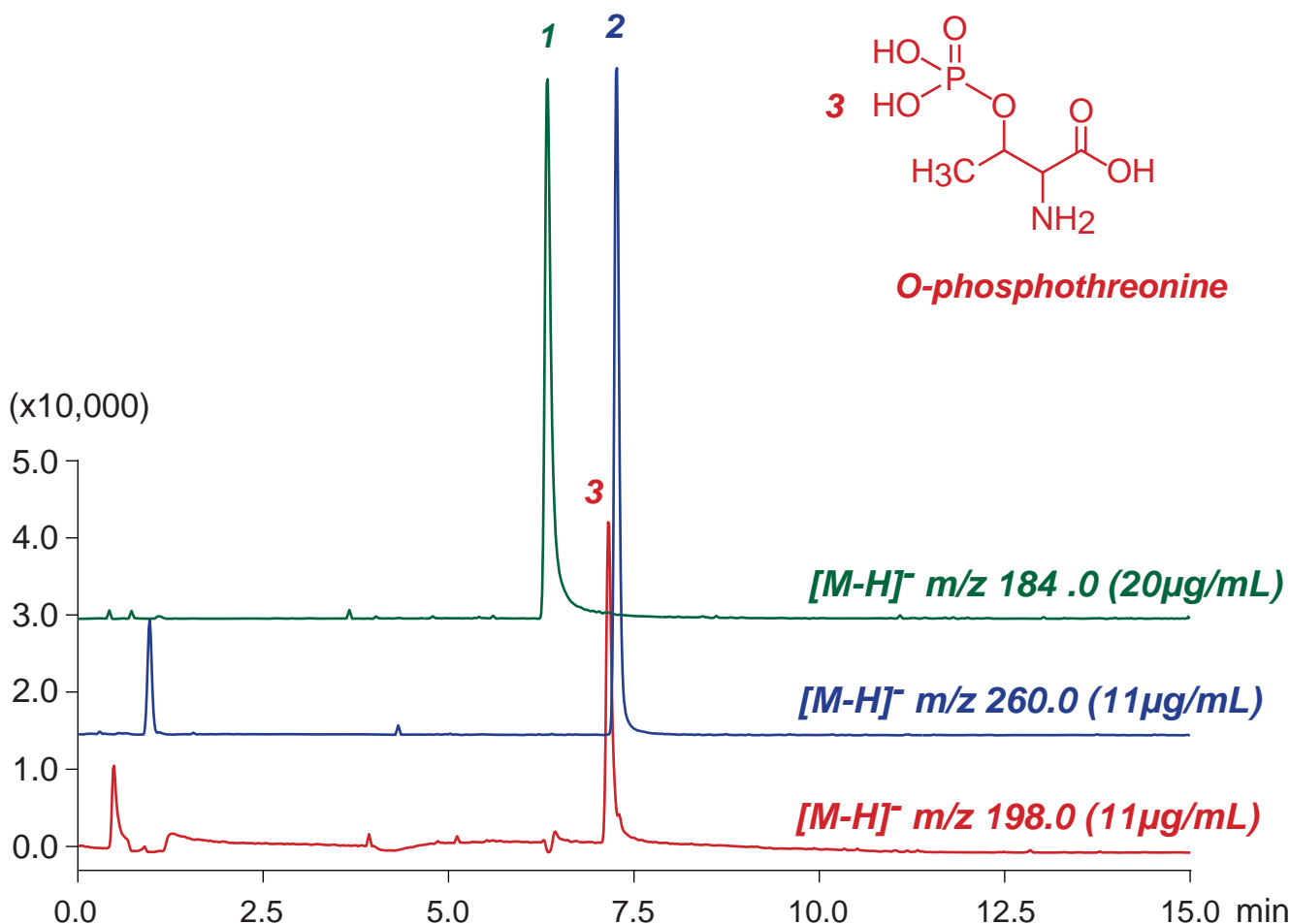
O-phosphoserine



O-phosphotyrosine



O-phosphothreonine



Intrada Amino Acid, 100 x 3 mm

A: acetonitrile / water / formic acid = 70 / 30 / 0.3

B: water / formic acid = 100 / 0.3

0%B (0-3min), 0-100%B (3-8min), 100%B (8-15min)

0.6 mL/min (6MPa), 37°C, 5 µL (11-20µg/mL, 1% HCOOH)

Single Quad. MS (ESI)