

Intrada SEC

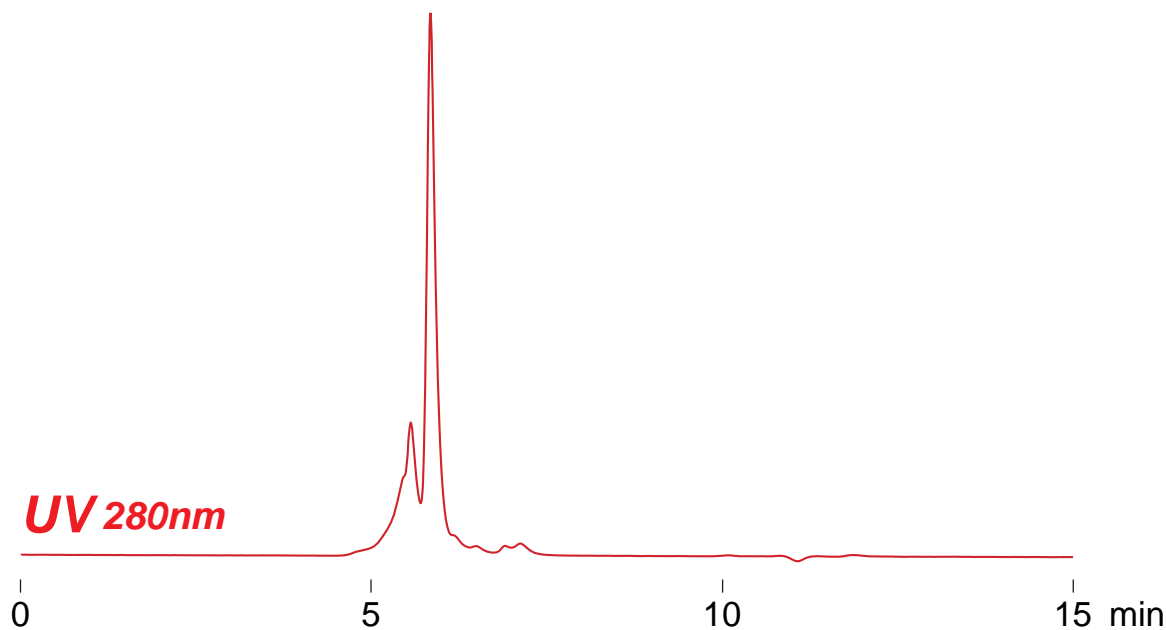
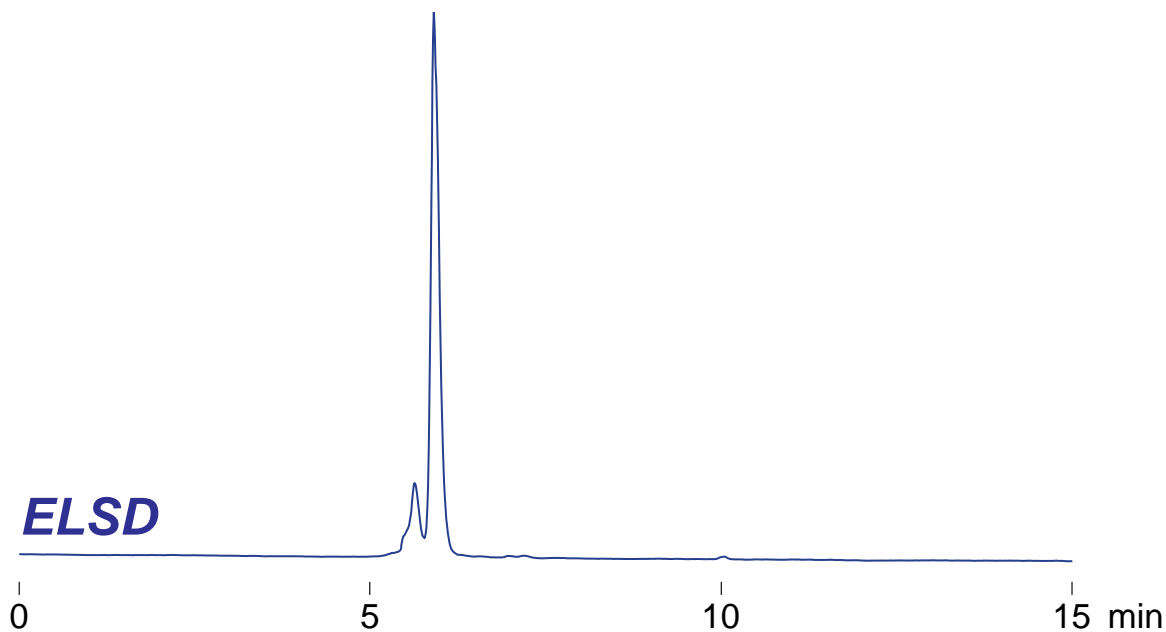
250 x 4.6 mm

HPLC COLUMN APPLICATION

Lactoferrin, from bovin milk

ラクトフェリン (牛乳由来)

lactoferrin (bovin milk, 83 kDa)



*Intrada SEC, 250 x 4.6 mm
water / trifluoroacetic acid = 100 / 0.1
0.3mL/min (5MPa), 37°C
10µL (1mg/mL, water)*