

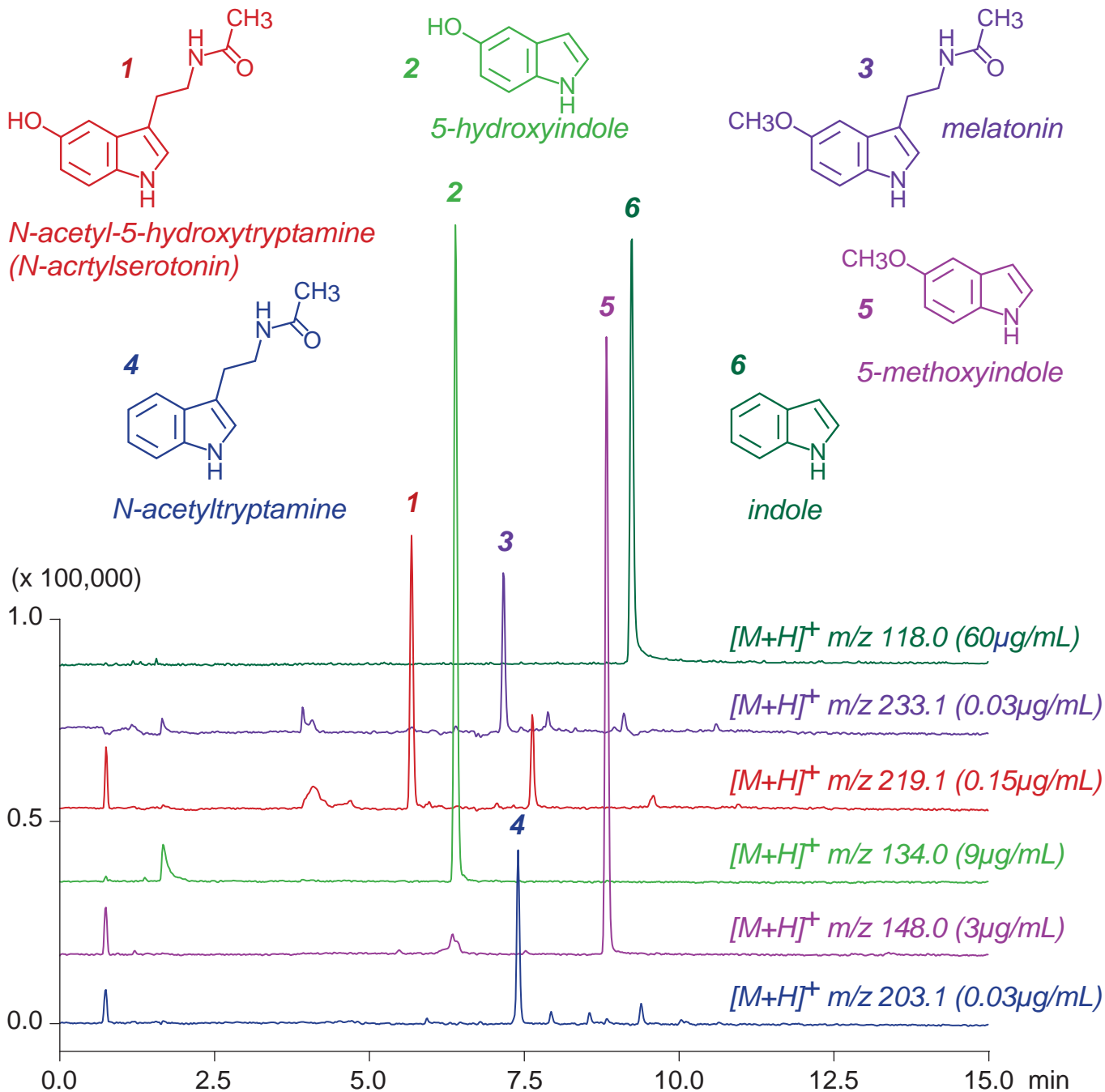
**Cadenza CX-C18**

100 x 3 mm

**HPLC COLUMN APPLICATION**

**LC-MS: Melatonin related compounds**

メラトニン関連化合物の LC-MS 分析



Cadenza CX-C18, 100 x 3 mm

A: water / formic acid = 100 / 0.1

B: water / acetonitrile / formic acid = 10 / 90 / 0.1

0%B (0-1min), 0-100%B (1-11min), 100%B (11-15min)

0.4mL/min (7MPa), 37°C, Single Quad. MS (ESI)

10 $\mu$ L (0.03-60 $\mu$ g/mL, EtOH / water / HCOOH = 30/ 70 / 1)