

Nardis ND-NX

150 x 3 mm

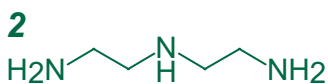
HPLC COLUMN APPLICATION

LC-MS: Synthetic polyamines

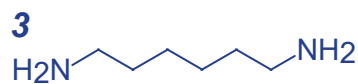
合成ポリアミンの LC-MS 分析



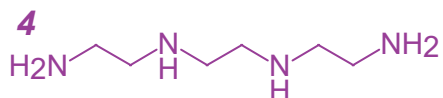
ethylenediamine



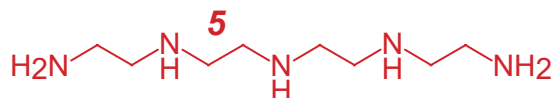
diethylenetriamine



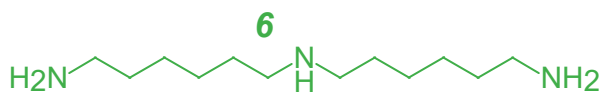
hexamethylenediamine



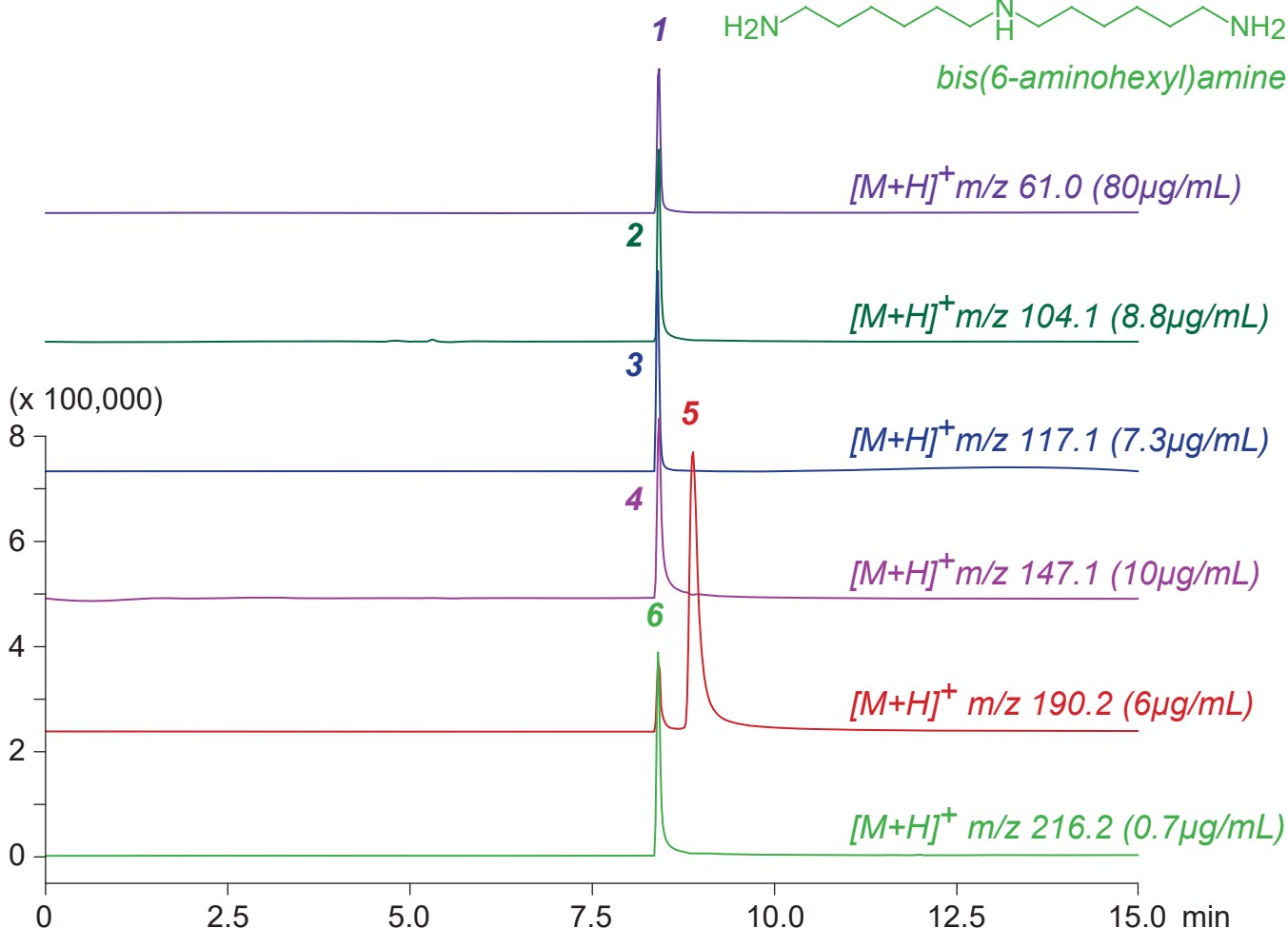
triethylenetetramine



tetraethylenepentamine



bis(6-aminohexyl)amine



Nardis ND-NX, 150 x 3 mm

A: acetonitrile / 20mM ammonium formate = 50 / 50

B: water / formic acid = 100 / 0.5

0-100%B (0-15min)

0.4mL/min (8MPa), 37°C, Single Quad. MS (ESI)

5µL (0.7-80µg/mL, 50mM ammonium formate)