

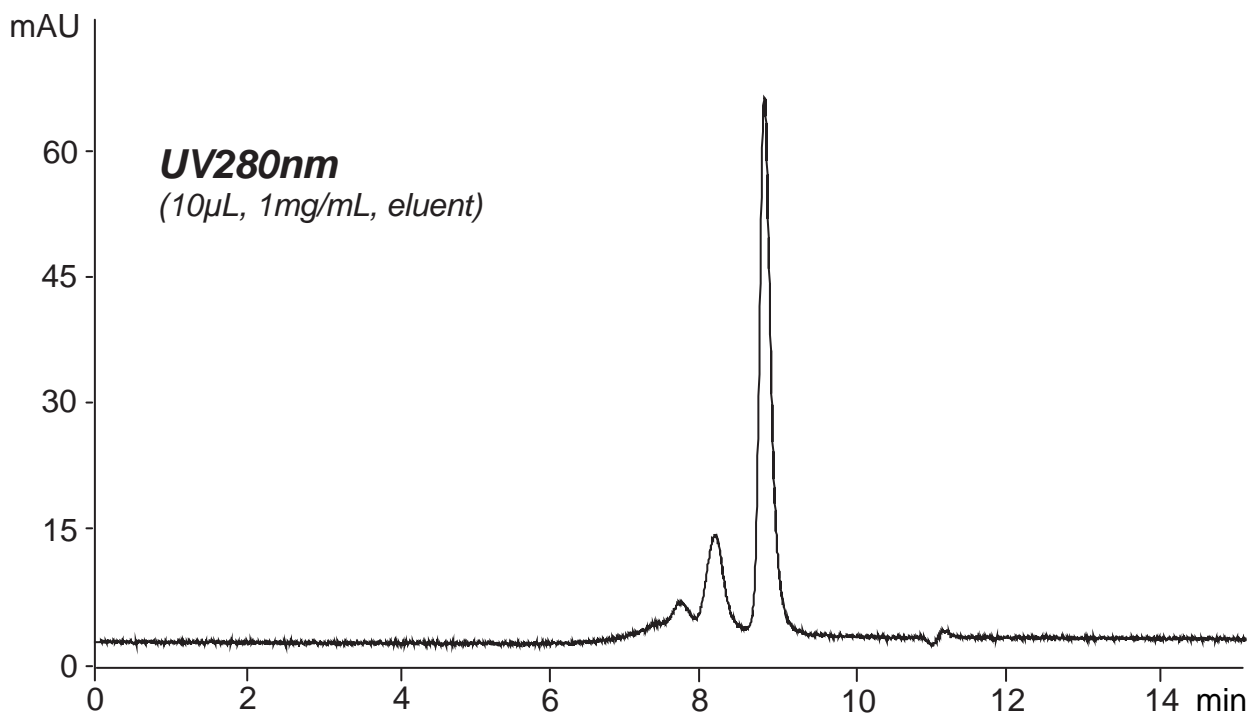
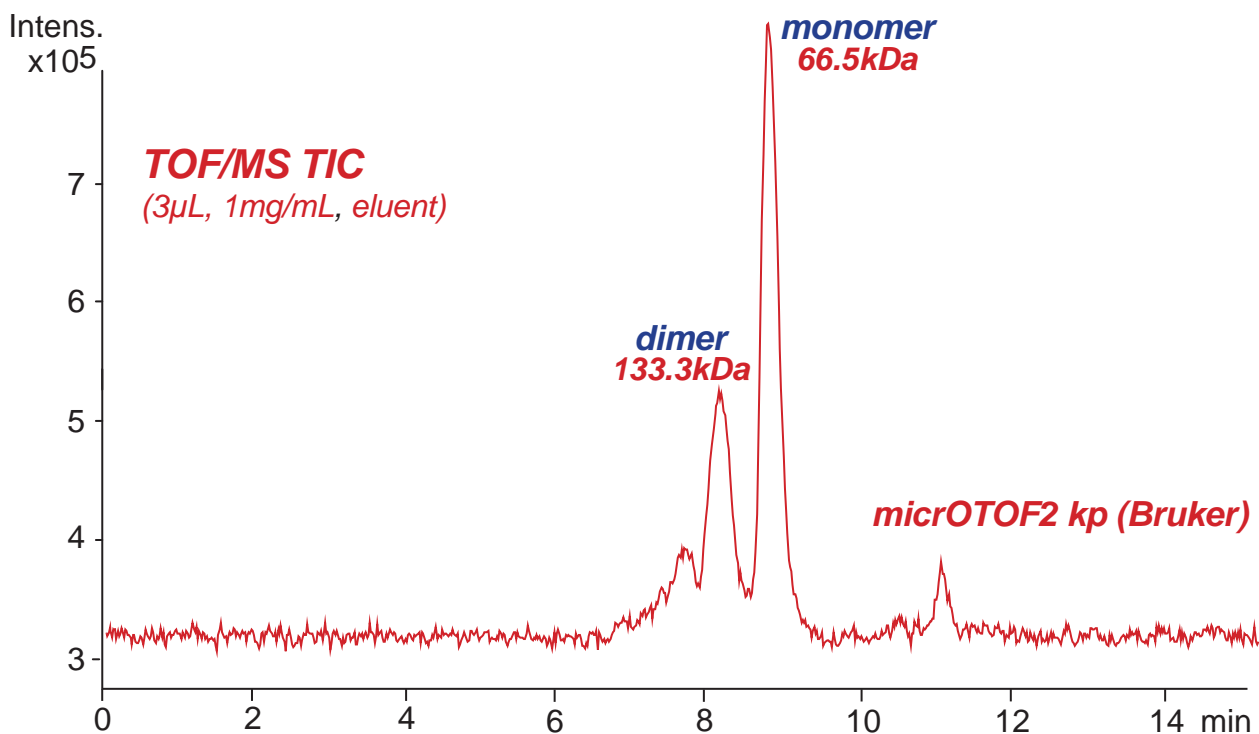
Intrada SEC

250 x 4.6 mm

HPLC COLUMN APPLICATION

SEC-MS: Recombinant human serum albumin (rHSA)

遺伝子組み換えヒト血清アルブミン (rHSA)の SEC-MS分析



Intrada SEC, 250 x 4.6 mm
100mM ammonium formate
0.3mL/min (6MPa), 37°C