

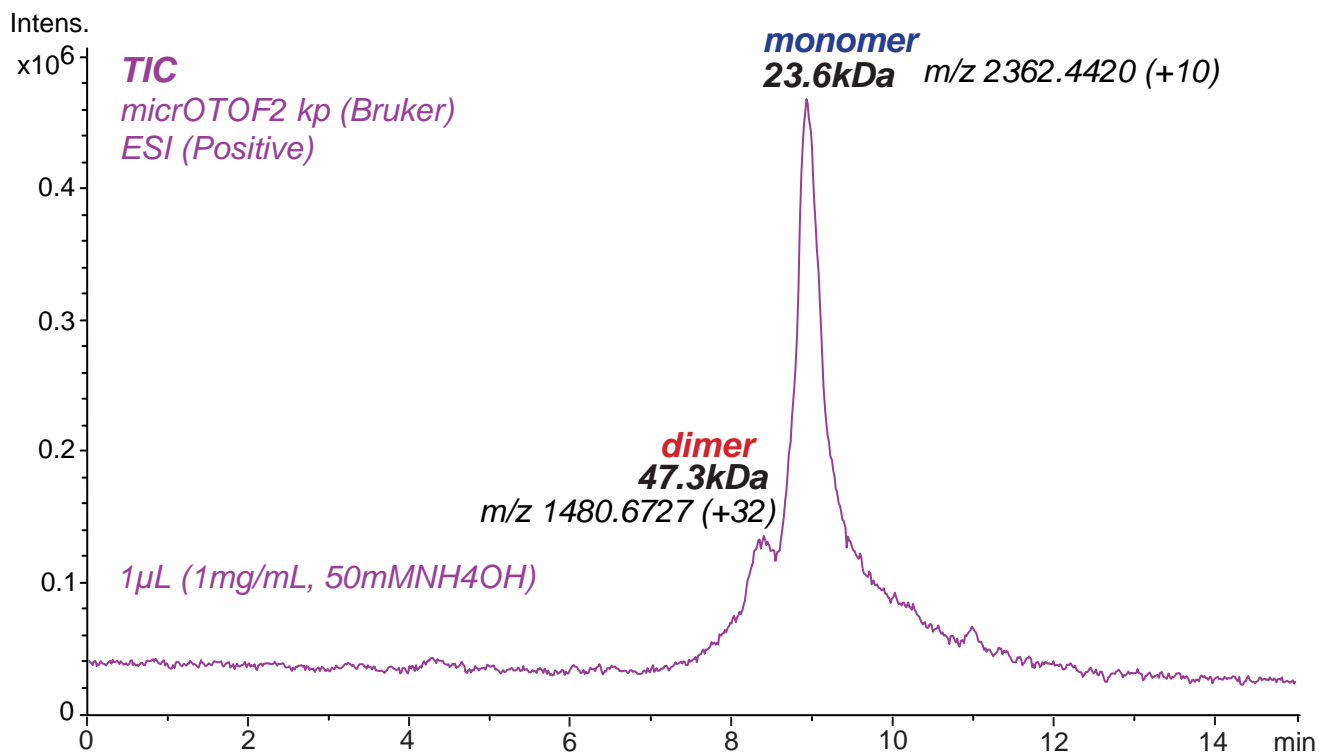
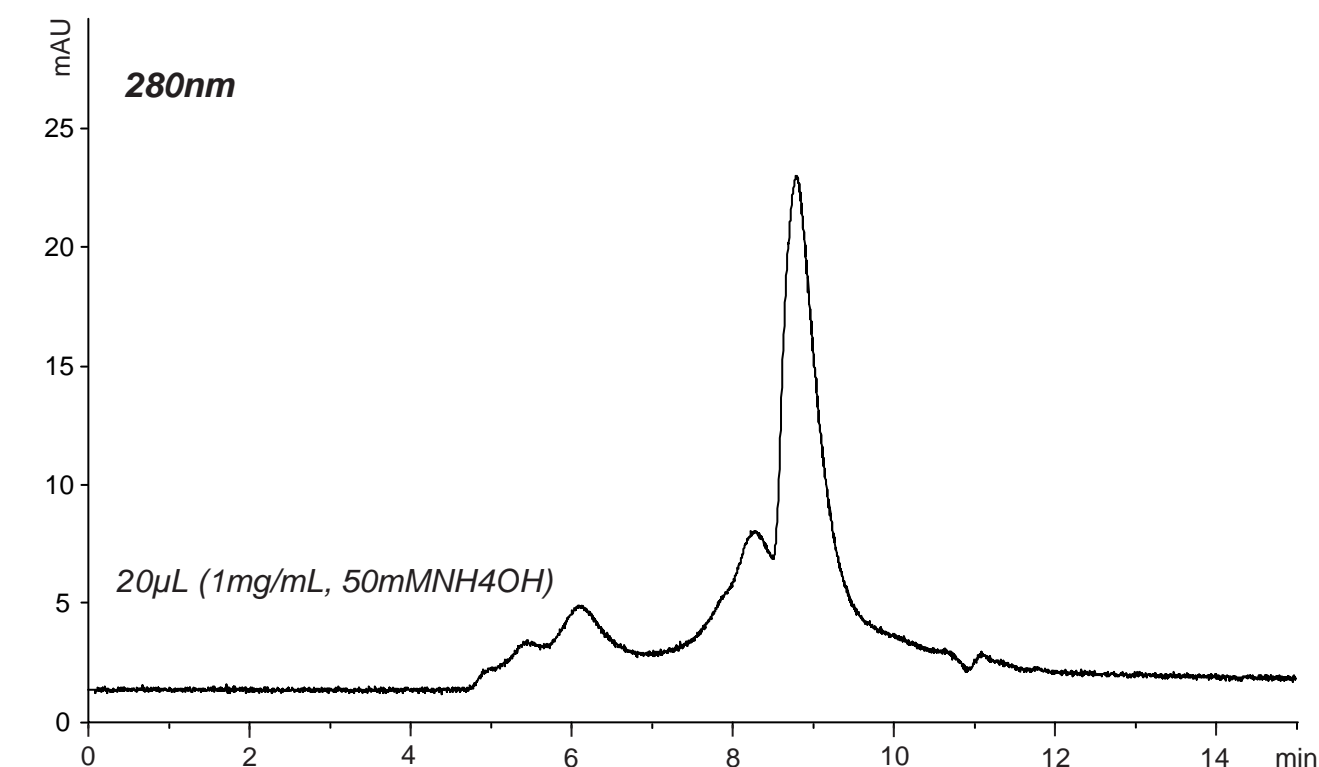
Intrada SEC

250 x 4.6 mm

HPLC COLUMN APPLICATION

SEC-MS: Casein (Bovine milk)

カゼイン (牛乳由来) の SEC-MS 分析



Intrada SEC, 250 x 4.6 mm
 100mM ammonium formate
 0.3mL/min (6MPa), 37°C