

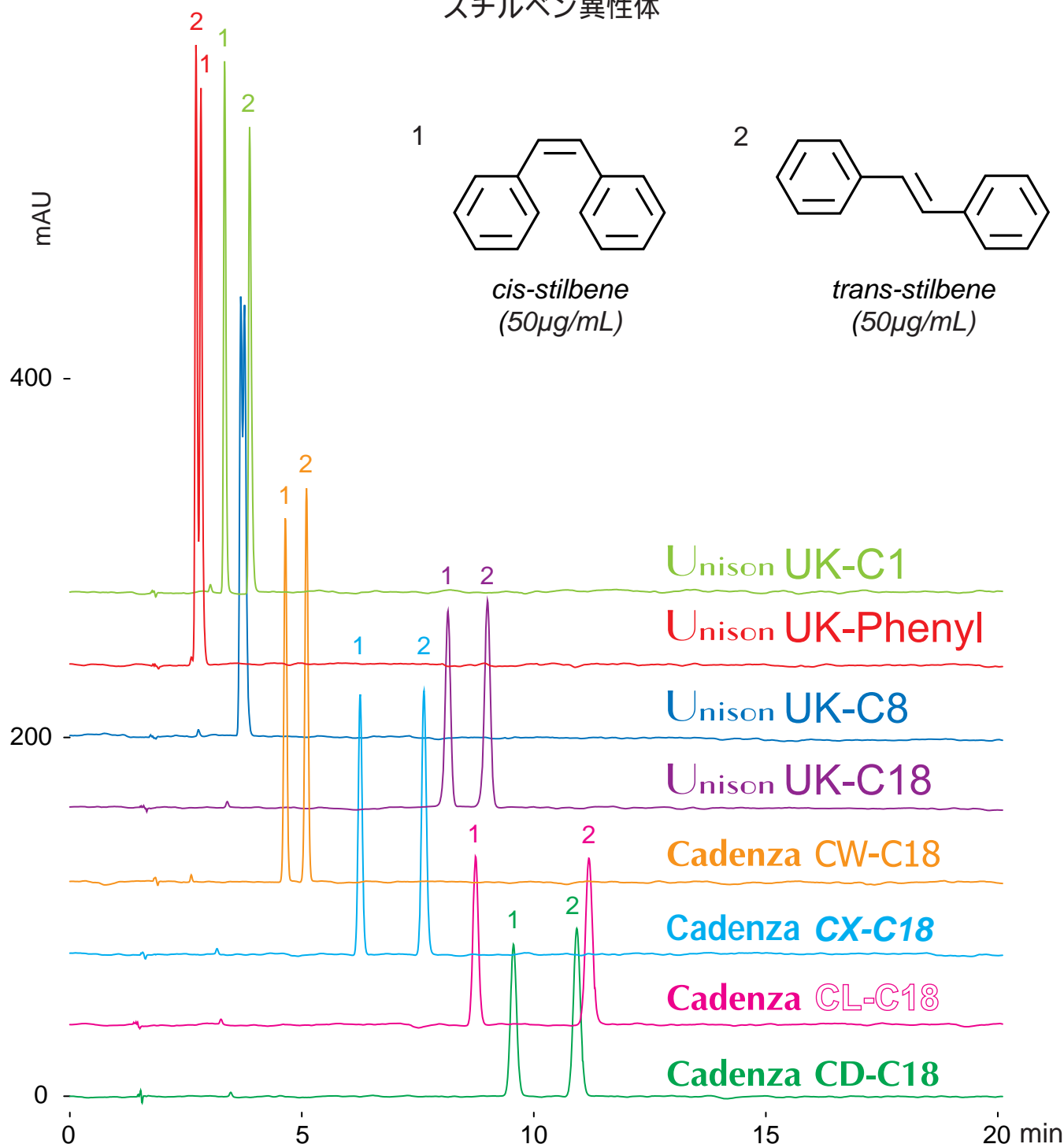
Cadenza CW-C18 Unison UK-C1
 Cadenza CX-C18 Unison UK-Phenyl
 Cadenza CL-C18 Unison UK-C8
 Cadenza CD-C18 Unison UK-C18

150 x 4.6 mm

HPLC COLUMN APPLICATION

Stilbene isomer

スチルベン異性体



150 x 4.6 mm
 methanol / water / acetic acid = 80 / 20 / 0.1
 1.0mL/min (14-17MPa), 37°C, 270nm
 10 μ L (50 μ g/mL, methanol)