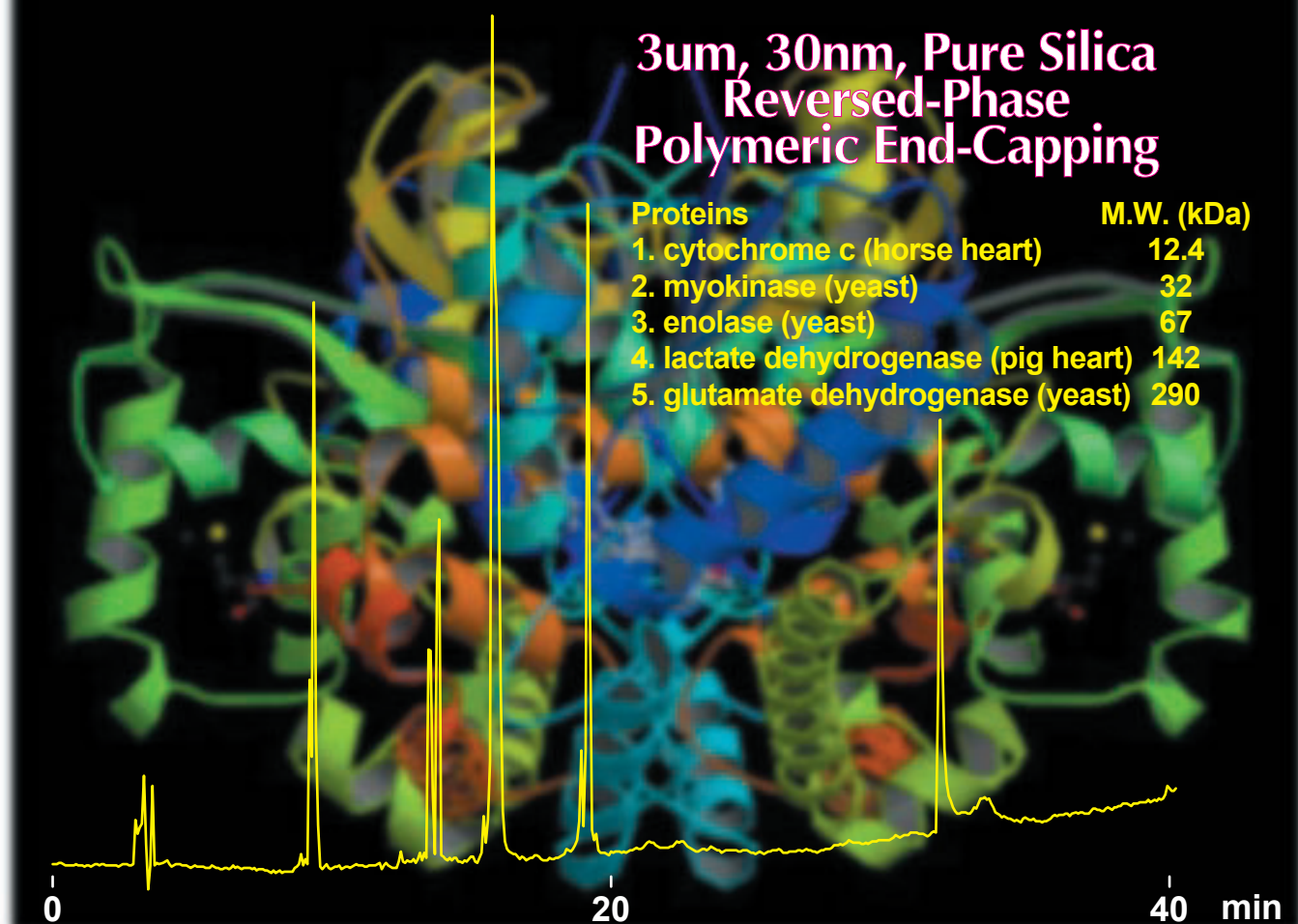


Intrada WP-RP

3µm, 30nm, Pure Silica
Reversed-Phase
Polymeric End-Capping

Proteins	M.W. (kDa)
1. cytochrome c (horse heart)	12.4
2. myokinase (yeast)	32
3. enolase (yeast)	67
4. lactate dehydrogenase (pig heart)	142
5. glutamate dehydrogenase (yeast)	290



250 x 4.6 mm, A: 0.1%TFA in water, B: 0.07%TFA in ACN, 20-85%B (0-40min), 1mL/min (14 MPa), 37 deg.C , 280nm , 10uL

Reversed-Phase Column for Polymer Separation

Reversed-phase tailored with a 30nm pore size
Optimal for the separation of proteins and other large molecules

Superior Resolution Column with 3µm Particles

High resolution 3µm Silica is used
Radically improved column efficiency compared with conventional 5µm columns

Optimal Structure Polarity for Faster Polymer Elution

Uses a newly developed reversed-phase ligand
Highly hydrophobic polymer elution made possible by optimal surface polarity

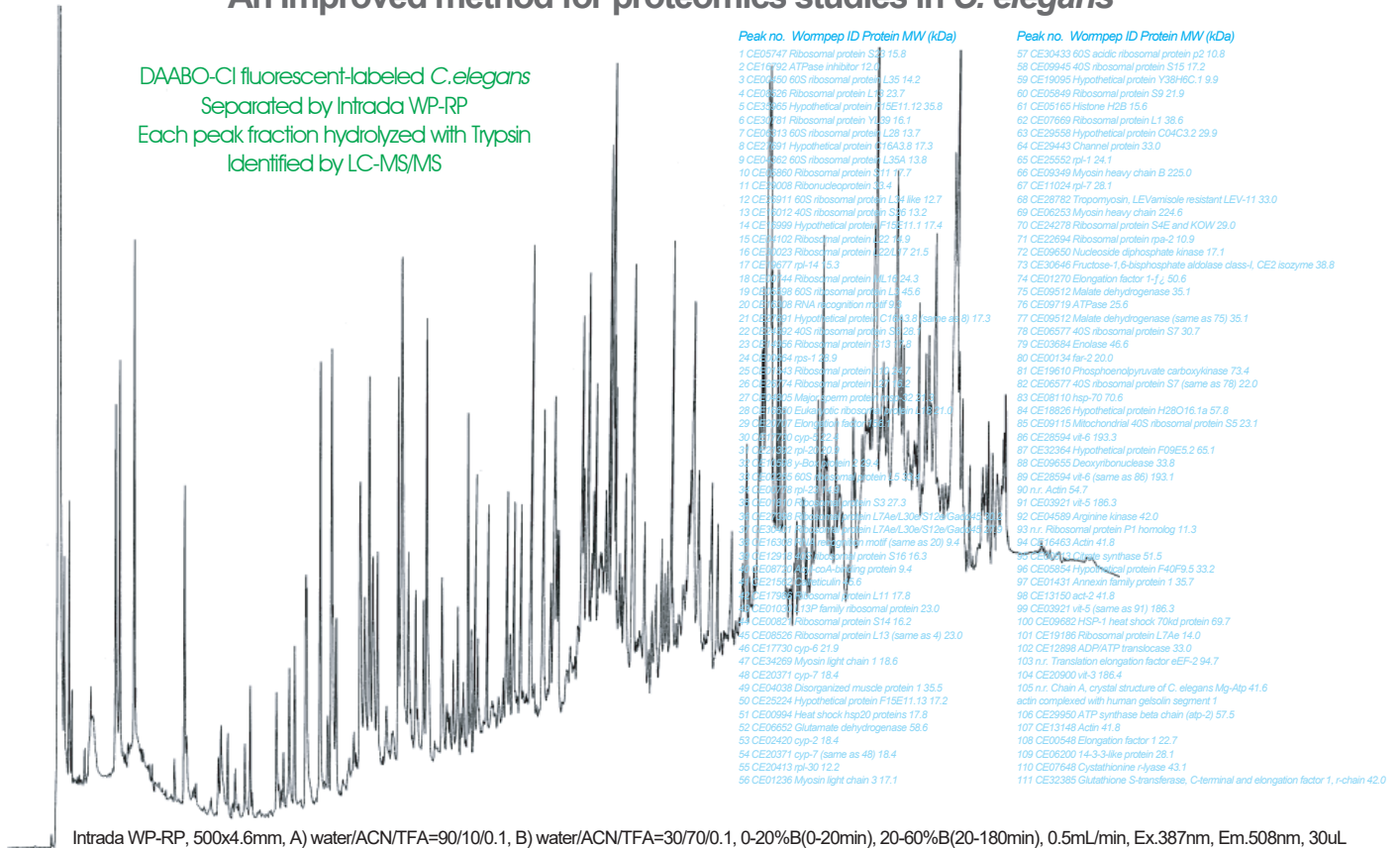
Key specifications: 3µm particle size, 30nm pore size, special ligand for reversed-phase, polymeric end-capping

High Resolution Separation of 111 Proteins (9-225 kDa)

New proteomic analytical method called the fluorescent labeled protein method using Intrada WP-RP (Courtesy of Professor Emeritus Imai, University of Tokyo, Japan). The 3um particular, 500mm column provides the ability to separate large numbers of proteins.

An Improved method for proteomics studies in *C. elegans*

DAABO-Cl fluorescent-labeled *C. elegans*
Separated by Intrada WP-RP
Each peak fraction hydrolyzed with Trypsin
Identified by LC-MS/MS



Intrada WP-RP, 500x4.6mm, A) water/ACN/TFA=90/10/0.1, B) water/ACN/TFA=30/70/0.1, 0-20%B(0-20min), 20-60%B(20-180min), 0.5mL/min, Ex.387nm, Em.508nm, 30uL
Courtesy of Prof. Imai, Musashino Univ. M.Masuda, H.Saimaru, N.Takamura and K.Imai, Biomed. Chromatogr., 19, 556-560 (2005)

Product Code Information

Length (mm)	Prod. Code					
	1 mm I.D.	2 mm I.D.	3 mm I.D.	4.6 mm I.D.	6 mm I.D.	10 mm I.D.
30	WPR11	WPR21	WPR31	WPRO1	WPR61	WPRP1
50	WPR12	WPR22	WPR32	WPRO2	WPR62	WPRP2
75	WPR13	WPR23	WPR33	WPRO3	WPR63	WPRP3
100	WPR14	WPR24	WPR34	WPRO4	WPR64	WPRP4
150	WPR15	WPR25	WPR35	WPRO5	WPR65	WPRP5
250	WPR16	WPR26	WPR36	WPRO6	WPR66	WPRP6
500				WPRO7		

Guard Cartridge WP-RP

Sep. Column	Prod.Code	Notes
For 1mm I.D.	GCWPRC	5 x 1 mm, 3pcs
For 2-6mm I.D.	GCWPRS	5 x 2 mm, 3pcs
For 10mm I.D.	GCWPRM	10 x 8 mm, 2pcs

Guard Holder

Sep. Column	Prod.Code
For 1-6mm I.D.	GCH01S
For 10mm I.D.	GCH02M