

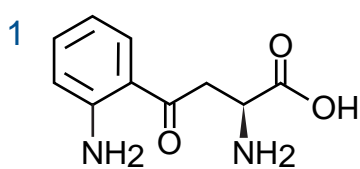
Intrada Amino Acid

50 x 3 mm

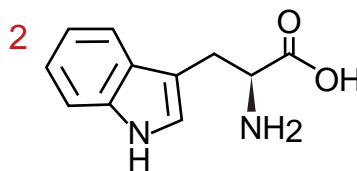
Application

LC-MS: Kynurenine / Tryptophan Ratio (KTR) of Human serum

ヒト血清のキヌレニン / トリプトファン比 (KTR)

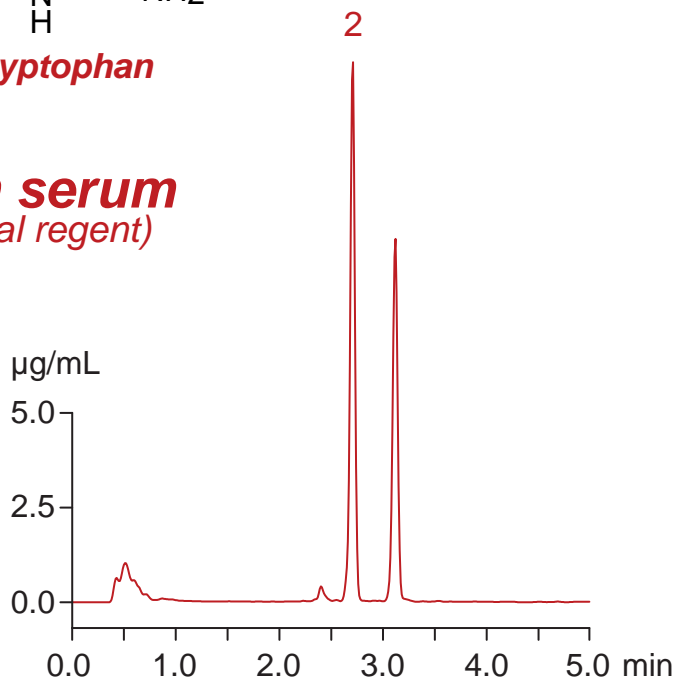
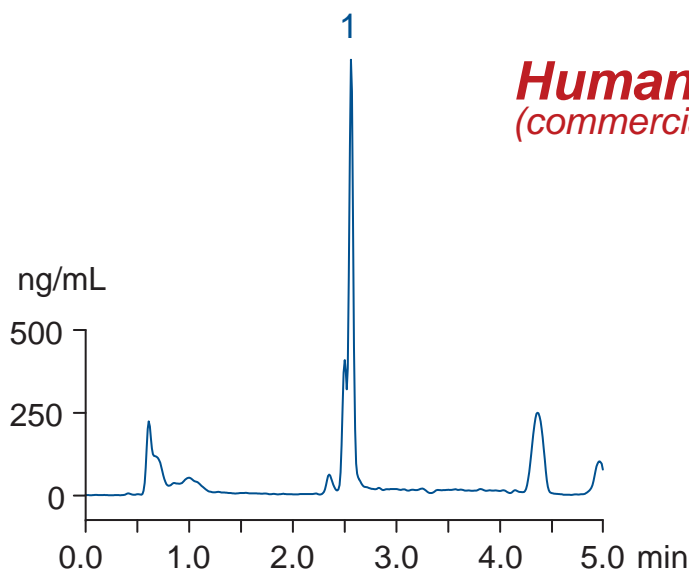


L-kynurenine



L-tryptophan

Human serum
(commercial reagent)



Human serum

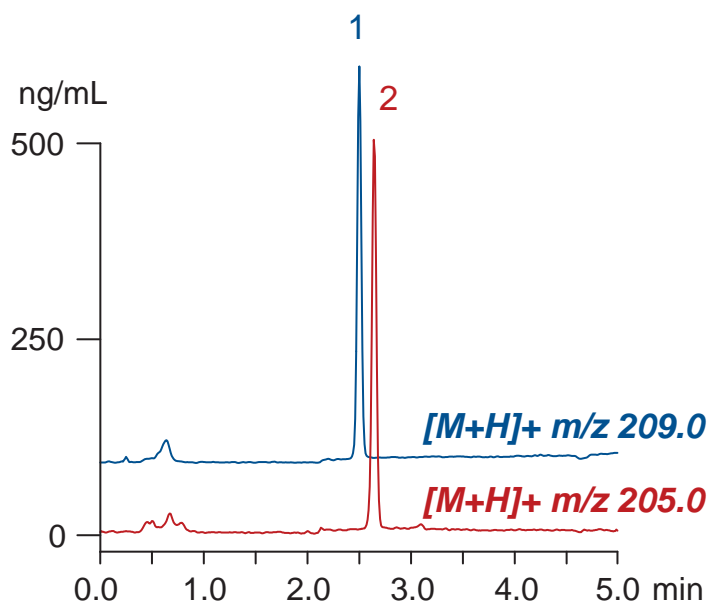
← 5% 5-sulfosalicylic acid (1:1, vol)

← mixing

← centrifugation (12000 rpm, 5 min)

Supernatant
(Injection Sample)

Standard solution
(500 ng/mL, 1% HCOOH)



Intrada Amino Acid, 50 x 3 mm
A: ACN / water / HCOOH = 60 / 40 / 0.5
B: ACN / 100mM HCOONH₄ = 20 / 80
10% (0-1min), 10-100%B (1-3 min)
100%B (3-5 min)
0.4 mL/min (3 MPa), 37°C, 20 µL
Single Quad. MS (ESI)