

**Intrada Amino Acid**

150 x 3 mm

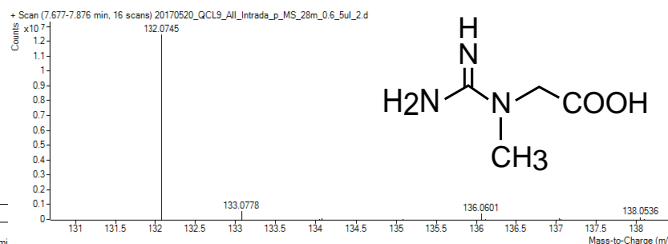
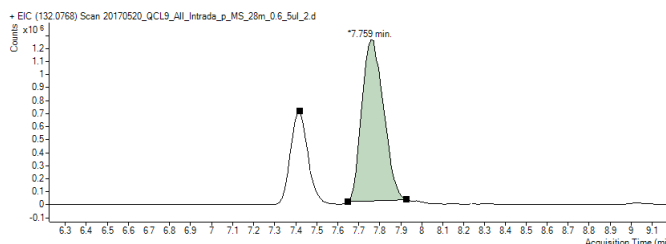
Application

**LC-TOFMS: Creatine compounds**

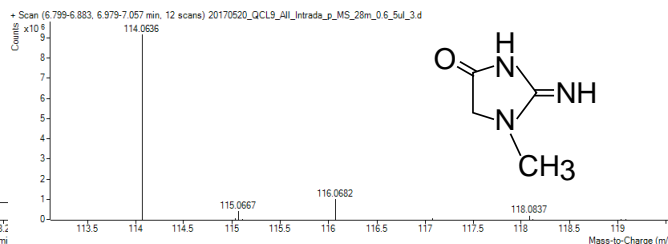
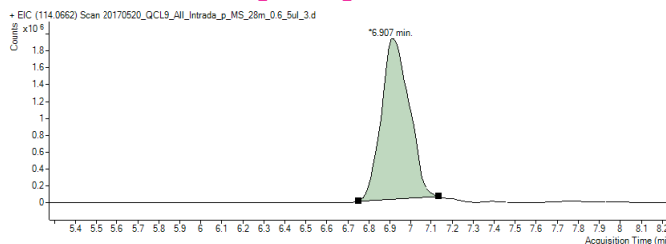
クレアチン類のLC-TOFMS分析

Metabolomics Core Facility, McGill University  
GB 2017/06/16

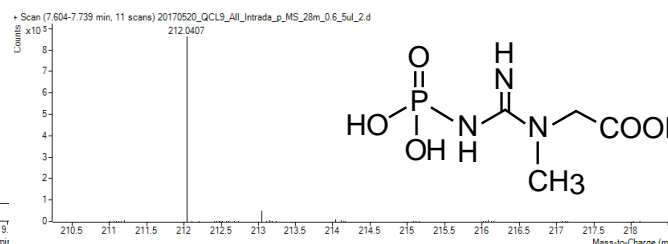
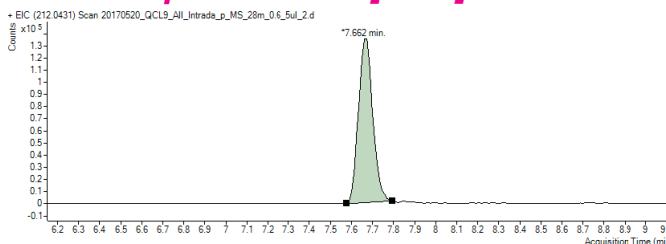
**Creatine [M+H]<sup>+</sup>: 132.0768**



**Creatinine [M+H]<sup>+</sup>: 114.0662**



**Phosphocreatine [M+H]<sup>+</sup>: 212.0431**



Intrada Amino Acid, 150x3mm

A) ACN /HCOOH = 100 / 0.3,      B) 100mM HCOONH4 in 20% ACN / 80% water  
0-27%B (0-3min), 27-100%B (3-19.5min), 100%B (19.5-25min), 0%B (25-32min)  
0.6 mL/min, 10°C, 5µL (ca. 1mM in water)

Agilent 1290 Infinity UHPLC - 6540 UHD Accurate-Mass Q-TOF mass spectrometer (ESI+)

Courtesy of Dr.Gaëlle Bridon and Dr.Daina Avizonis, McGill University, CANADA