

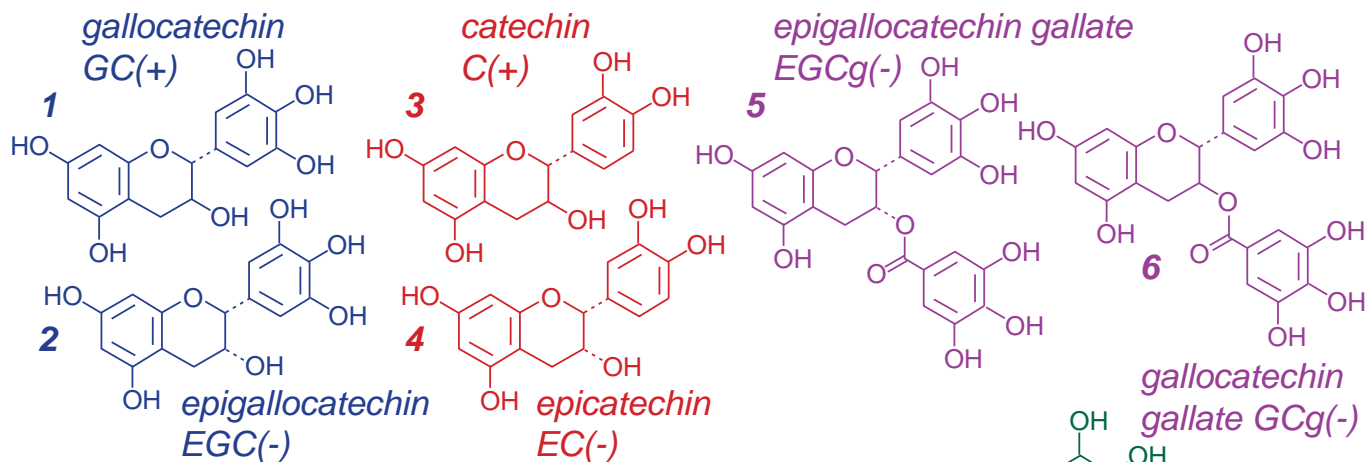
Scherzo SM-C18

150 x 3 mm

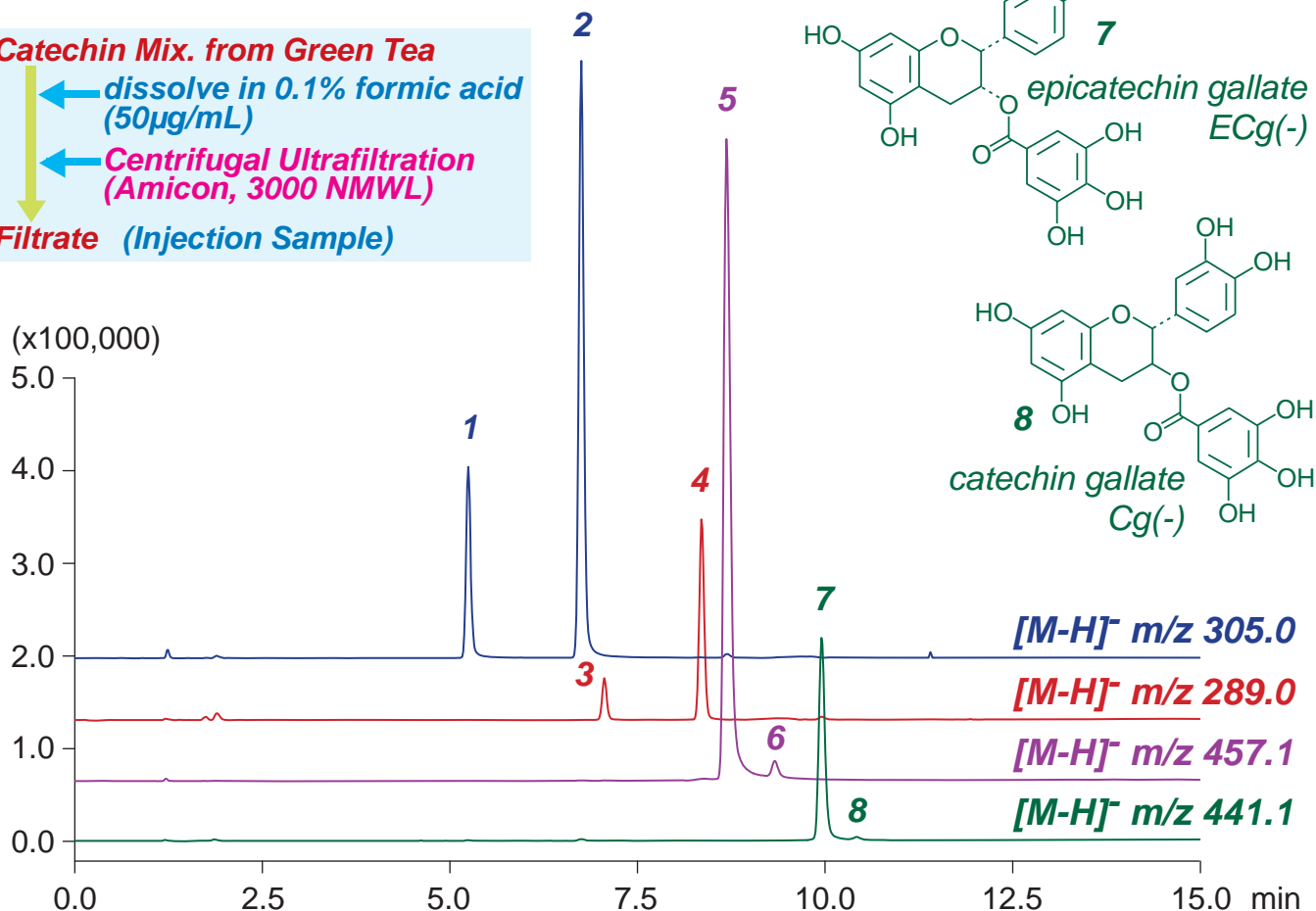
Application

LC-MS: Catechin Mixture from Green Tea

カテキン混合物（緑茶由来）中のカテキン類のLC-MS分析



Catechin Mix. from Green Tea
 ↓ dissolve in 0.1% formic acid (50µg/mL)
 ↓ Centrifugal Ultrafiltration (Amicon, 3000 NMWL)
Filtrate (Injection Sample)



Scherzo SM-C18, 150 x 3 mm
 A: water / formic acid = 100 / 0.1
 B: methanol / water / formic acid = 60 / 40 / 0.5
 20%B (0-1min), 20-100%B (1-12min), 100%B (12-15min)
 0.4mL/min (10MPa), 37°C, 5µL
 MS (ESI, SIM, Negative)